

7" Dual Rack Mount Monitor



User Manual

1. Product Overview

Thank you for using our photography, broadcast kits Dual Rack Mount Multi-Functional Color LCD Monitor. This monitor adopts advanced integrated circuits, high-quality IPS LCD panel, which makes it low power consumption, stable performance, no radiation, strong compatibility, and adjustable color temperature control etc. To meet different customers' needs, our monitor has the serial digital interface signals SDI (optional), high-definition multimedia interface HDMI, composite video signals CVBS input & output port.

To ensure best use of the unit, please read the user's manual carefully.

CAUTION

1. Please use the adapter attached in the accessory, if necessary, please use qualified adapter.
2. Please do not store or use in too cold, too hot or humid place.
3. Please keep the monitor away from the strong light while using this product to ensure the image effect and long-term use.
4. Please avoid heavy impact or drop onto the ground.
5. Please do NOT use chemical solutions to clean this product. Please wipe the monitor with a clean soft cloth to maintain the brightness of the surface.
6. No adjustable components in the monitor. Please do not take apart or repair the unit by yourself, to avoid the damage of the product.

Function Feature

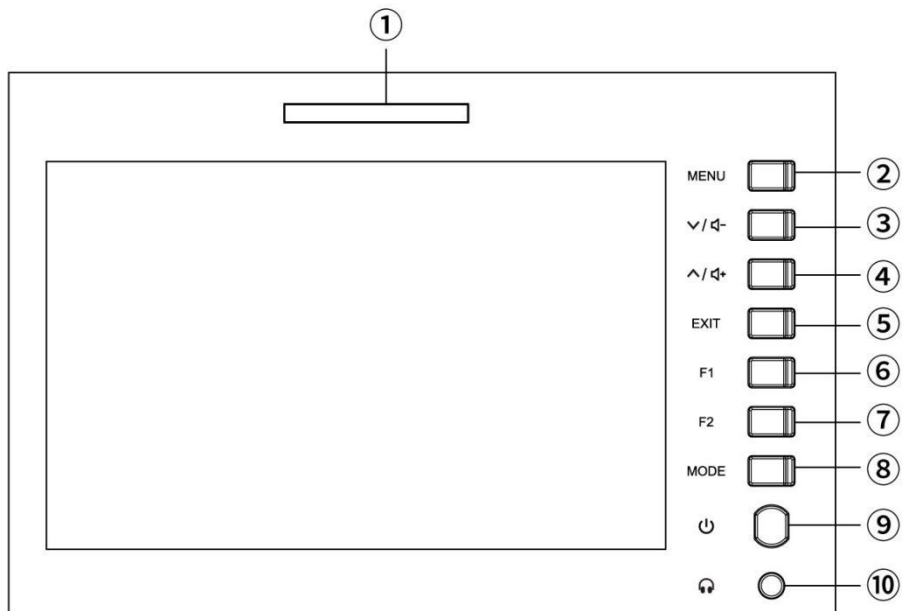
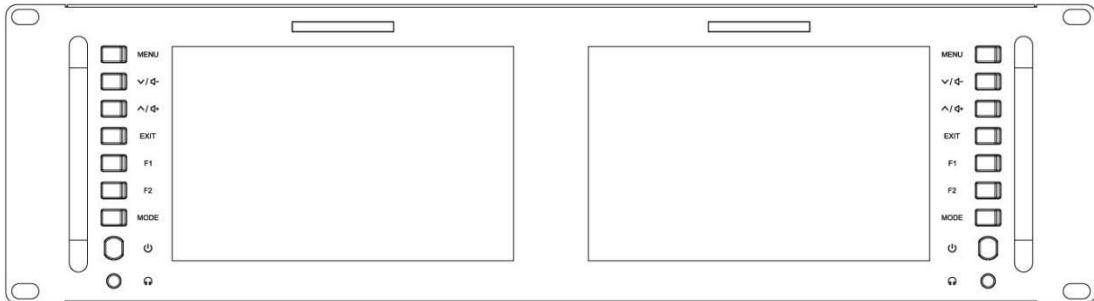
- ◆ Waveform: RGB、YUV、Y
- ◆ Histogram:
- ◆ Focus Assist Function
- ◆ Screen Marker, Center Marker (cross mark) display setting
- ◆ Screen Marker: 80%、85%、90%、93%、96%、2.35:1
- ◆ Image Freeze: The current picture still (capture function)
- ◆ Image Flip: H/V Flip, H Flip, V Flip of the image around flip
- ◆ Check Field: To switch among Mono, Red, Green, Blue
- ◆ P2P: The display mode that makes the resolution of the image is consistent with display of the physical resolution.
- ◆ Aspect Ratio: To change the display to ratio Panorama, (Auto, 16:9, 16:10, 4:3, 5:4, 1.85:1, 2.35:1, Full Screen)
- ◆ Image zoom function can set Zoom All, U/D Zoom, L/R Zoom.
- ◆ Panel buttons (F1,F2) function custom settings
- ◆ LED backlight, Image display more brighter, screen does not flicker.
- ◆ Front panel stereo earphone output.
- ◆ Multiple signal output port, flexible use.
- ◆ Can set the monitor menu and functions through Ethernet connection.

CONTENTS



| | |
|---------------------------------------|-----------|
| 1. Product Description | 4 |
| 1.1 Front Panel Features | 4 |
| 1.2 Rear Panel Features | 5 |
| 1.3 Power Input Way | 6 |
| 1.4 TALLY Indicator Connection | 7 |
| 2. Ethernet Connection | 7 |
| 3. Menu Function Introduction | 13 |
| 4. Support Signal Formats | 17 |
| 5. Parameters | 18 |
| 6. Trouble Shooting | 19 |

1. Product Description

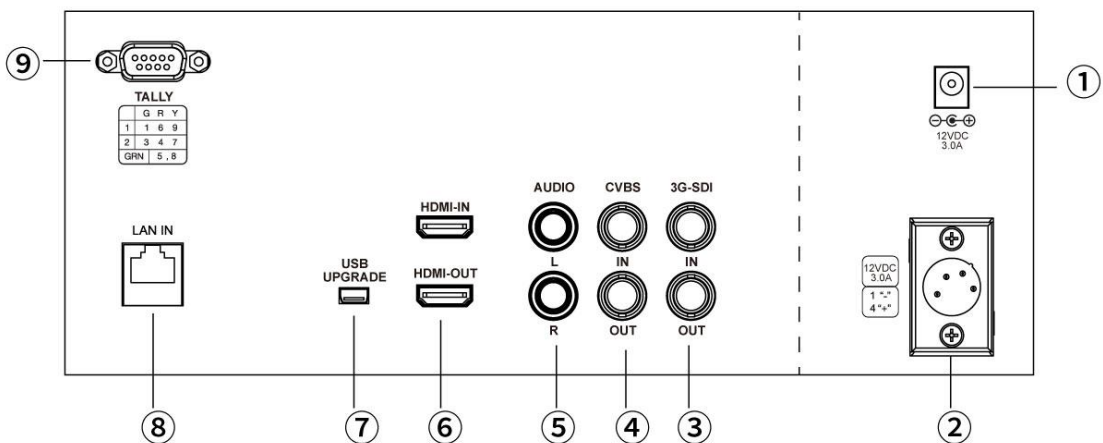
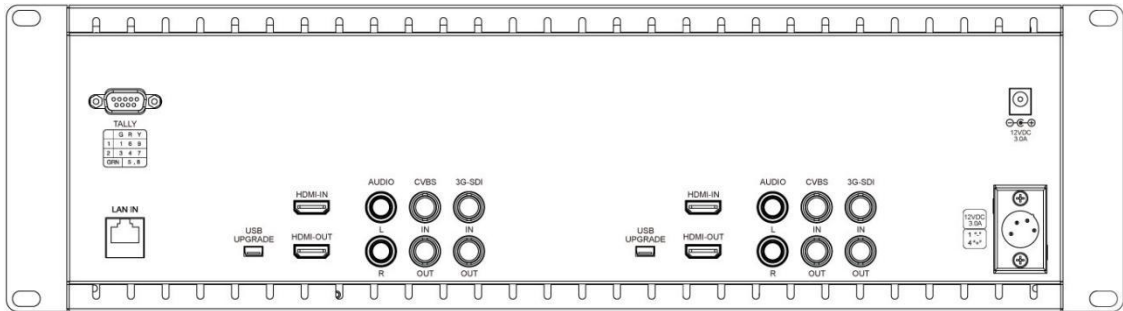
1.1 Front Panel Features



| | | |
|---|-------------|---|
| ① | / | Tally indicator |
| ② | MENU | Menu button, enter/confirm |
| ③ | v/◀ | Next item selection/parameters increasing after enter the menu; Volume decrease adjustment when menu without display |
| ④ | ^/▶ | Previous item selection/parameters decreasing after enter the menu; |

| | | |
|---|---|--|
| | | Volume increasing adjustment when menu without display |
| ⑤ | EXIT | Exit the menu |
| ⑥ | F1 | Custom function shortcut button |
| ⑦ | F2 | Custom function shortcut button |
| ⑧ | MODE | Input signal selection and confirm |
| ⑨ |  | Power Switch |
| ⑩ |  | Earphone jack port |

1.2 Rear Panel Features



| | | |
|---|---|-----------------------------|
| ① | / | DC 12V Power Input |
| ② | / | 4-pin XLR DC12V power input |

| | | |
|---|----------------------|--|
| ③ | 3G/SDI (optional) | IN (SDI serial data input) OUT(SDI serial data output) |
| ④ | CVBS | IN(Composite video broadcast signal input) OUT(Composite video broadcast signal output) |
| ⑤ | AUDIO | L(Audio signal left stereo input) R(Audio signal right stereo input) |
| ⑥ | HDMI | IN(High definition multimedia interface input) OUT(High definition multimedia interface output) |
| ⑦ | USB UPGRADE | Firmware update,LUT file importing port |
| ⑧ | LAN IN | Ethernet LAN Connector |
| ⑨ | TALLY | TALLY indicator input port |

1.3 Power Input Way

There are two ways of power supply to our monitor:

- A. The direct plug-in DC power input port supply. Please use DC5.5*2.1m DC power plug, power input polarity as shown

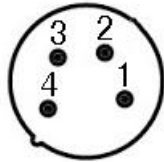


below:

Please use the qualified power supply with output power no less than 21W DC 9-24V.

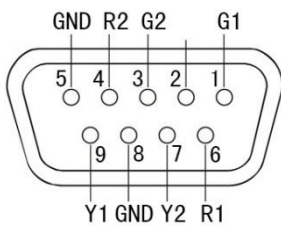
- B. Via 4 pin XLR interface power supply.

Polarity of the 4-pin XLR power input as shown below, please note the polarity of the power input, otherwise it may damage monitor.



| Pin number | Signal |
|------------|---------------|
| 1 | GND |
| 2 | No connection |
| 3 | No connection |
| 4 | +12V |

1.4 TALLY Indicator Connection

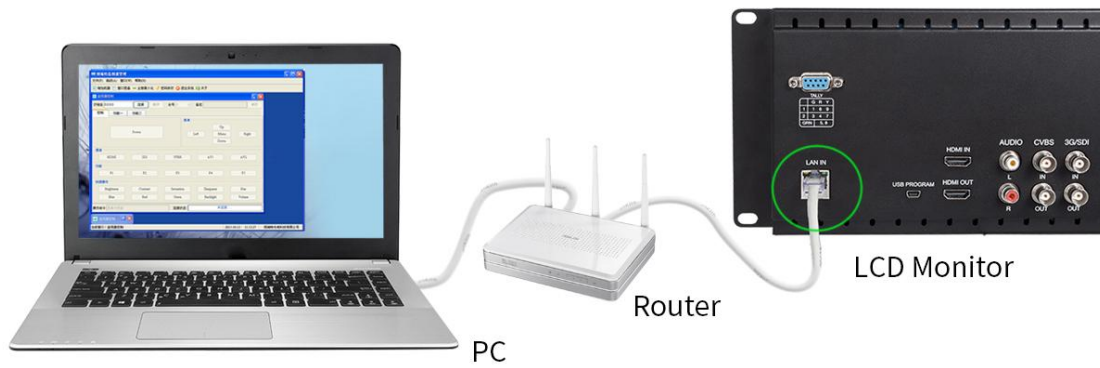


| Indicator Color | Pin Connection | |
|-----------------|----------------|----------|
| | 1 Screen | 2 Screen |
| Green | 1-5 | 3-8 |
| Red | 6-5 | 4-8 |
| Yellow | 9-5 | 7-8 |

GND port 5 and 8 is sharing

2. Ethernet Connection


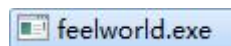
Our monitor is equipped with Ethernet interface, and users can connect the PC with our monitor through the Ethernet port. Users can use the software to control the monitor and send their control and command to the specific monitor, as follows:



Connect the LAN port on the back of the monitor to the network. After connection, the monitor will display the same IP address with that device.

Get the control software: Download from the details page of D71PLUS or D71PLUS-H from website www.feelworld.cn



After downloaded open file  , Double Click 



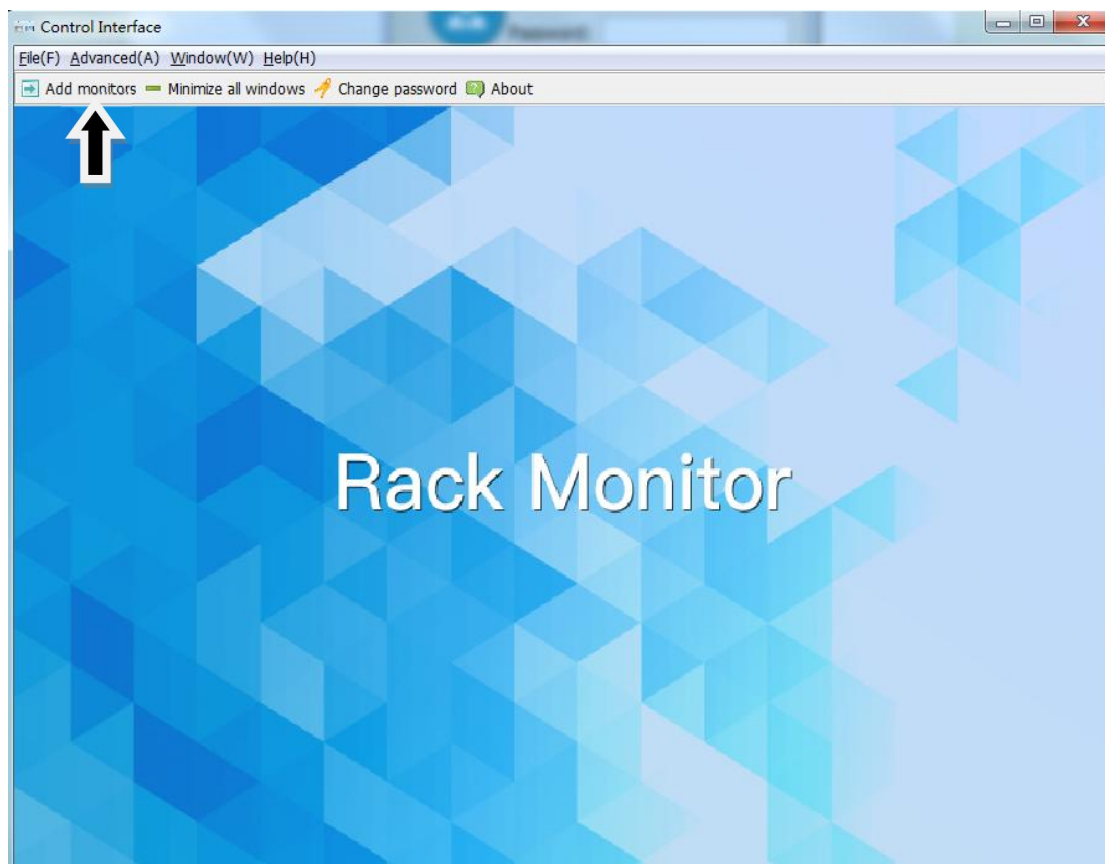
Then, Input:

Username: admin

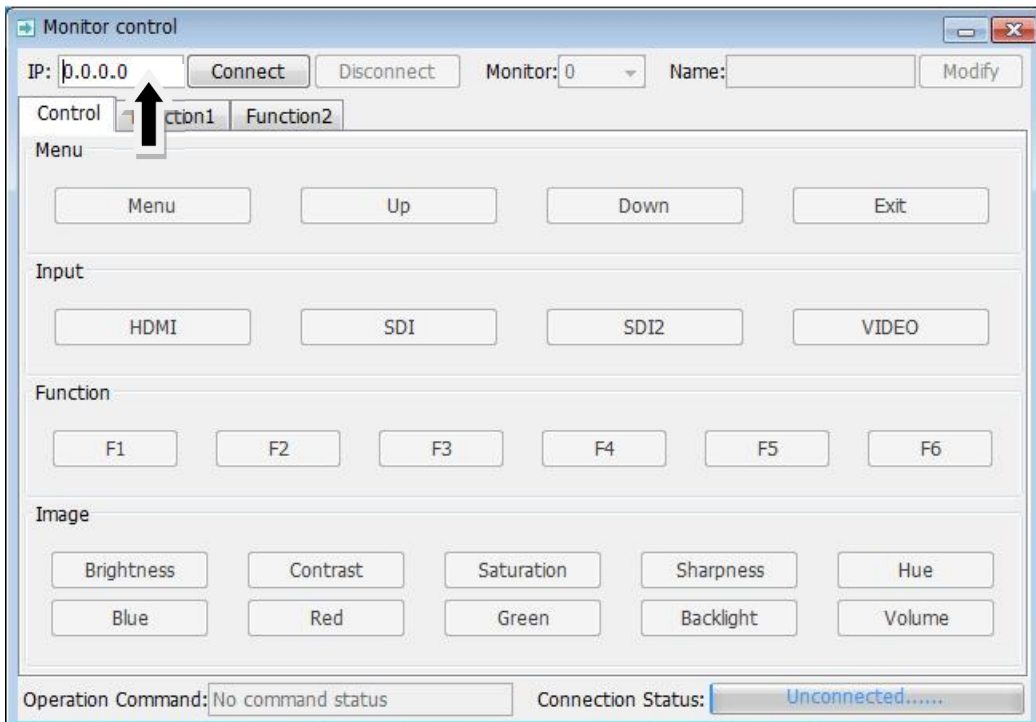
Password:123456,

Click Login In

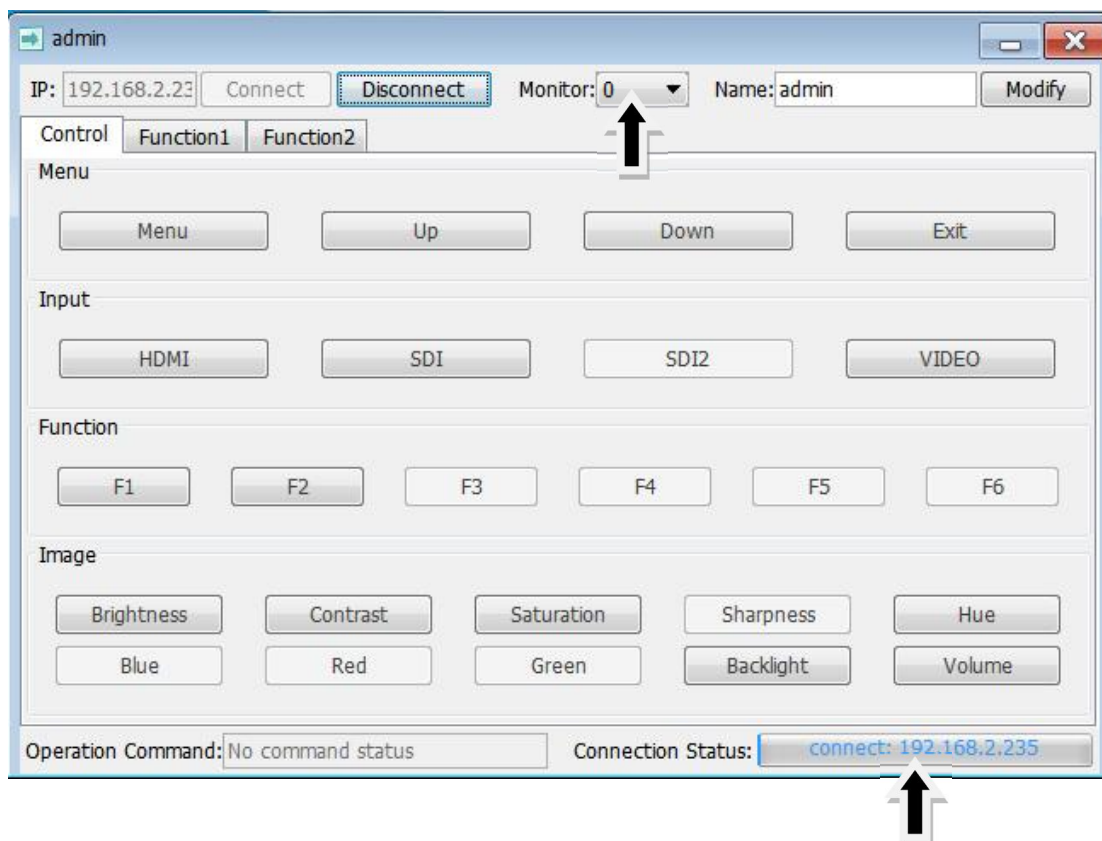
After login in, Click: Add monitor



Input IP address (The same as the IP address displayed on the monitor.)



Select the controlled monitor (number 0 control left monitor, number 1 control right monitor)



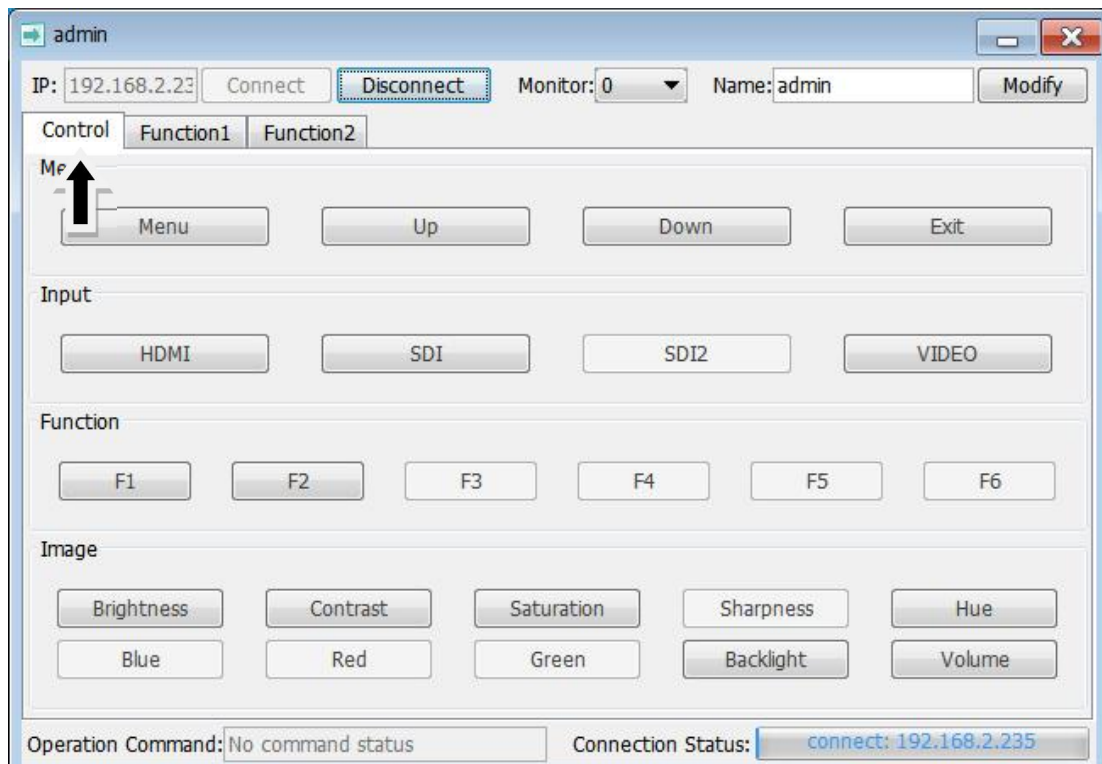
Check: Connection Status,

If connected, the IP address will be displayed. e.g:

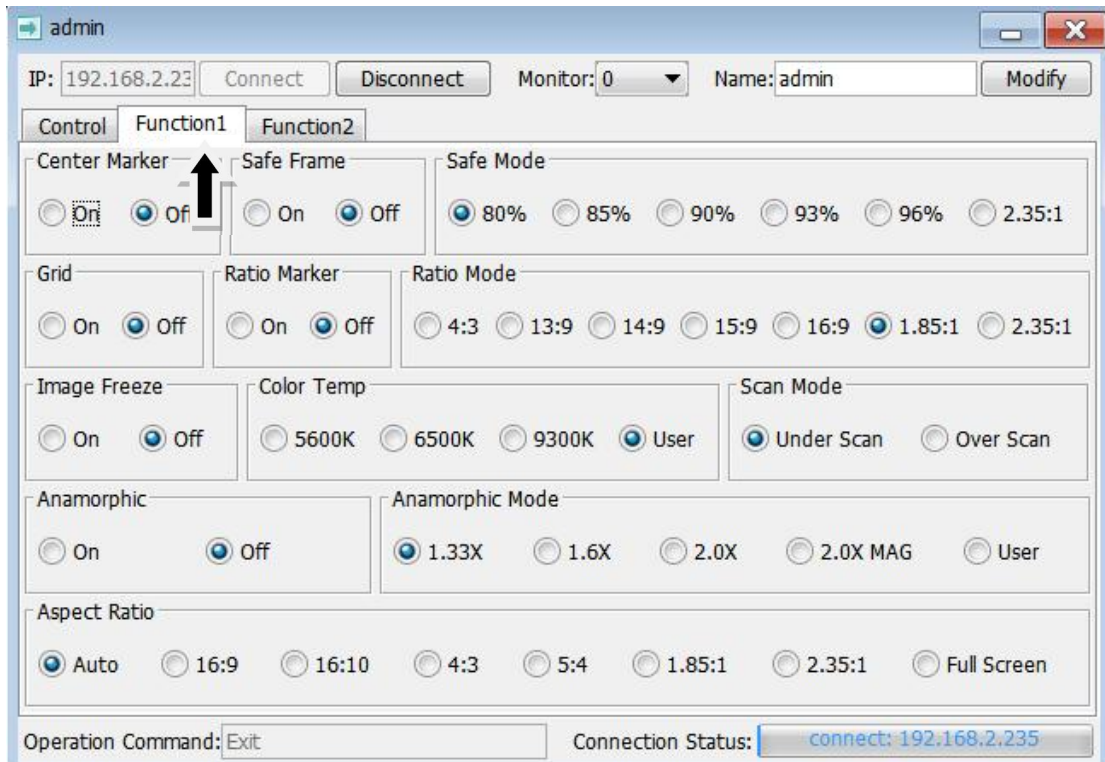


Then users can click the corresponding control bar to control and command the parameters:

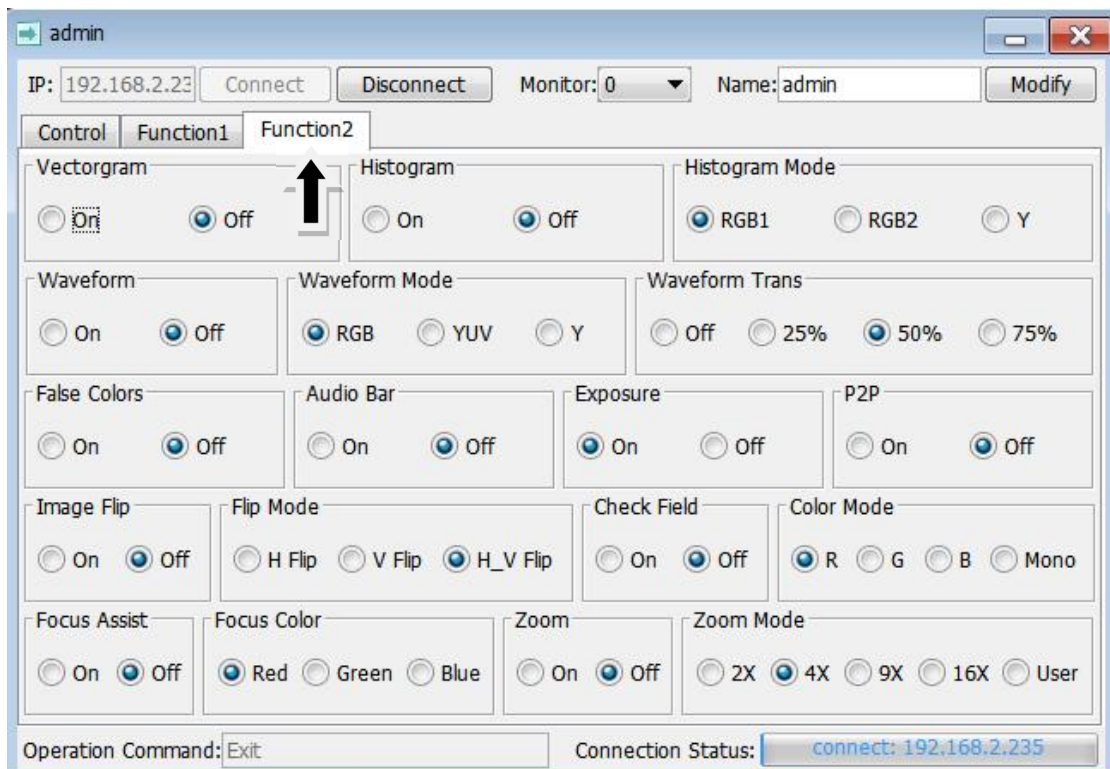
Control:



Function1:



Function2:







3. Menu Function Instruction







Functional Assist

| | |
|-----------------------|--|
| All Waves | <p>On, Off</p> <p>After turning on, waveform, vector, histogram and embedded audio will be shown.</p> |
| Waveform | <p>On, Off</p> <p>Mode : RGB、YUV、 Y</p> <p>This essential feature assists with the calibration of professional video cameras. It shows the overall brightness of the image assisting the video professional in correcting exposure. The waveform feature also checks the evenness of the lighting when lighting a chromakey or background.</p> <p>Waves Trans. : Off, 25%, 50%, 75%</p> |
| Vector | <p>On, Off</p> <p>shows how saturated the image is and where the pixels in the image land on the color spectrum.</p> |
| Histogram | <p>On, Off</p> <p>Mode: RGB1、 RGB2、 Y</p> |
| Focus Assist | <p>On, Off</p> <p>Color : (Red, Green, Blue)</p> <p>Peaking Level :you can adjust the peaking level after turning on (1 ~ 10)</p> |
| Embedded Audio | <p>On, Off</p> <p>The Audio Level Meters provide numerical indicators and headroom levels. The audio meter is green, and will turn yellow when exceeds -20dB, and turn red when exceeds</p> |

| | |
|---|---|
| | -9dB. |
|  Over Exposure | On, Off Exposure Level : you can adjust the exposure level after turning on (10~100) |
|  Check Field | On, Off Mode : Red, Green, Blue, Mono |
|  False Colors | On, Off |
|  Time Code (Only under SDI signal) | On, Off Mode: LTC, VITC |










Mark

| | |
|--|--|
|  Nine Grid | On, Off Color: Red, Green, Blue, Black, White, Gray |
|  Safe Frames | On, Off Mode: 80%, 85%, 90%, 93%, 96%, 2.35:1 Color: Red, Green, Blue, Black, White, Gray |
|  Center Marker | On, Off Color : Red, Green, Blue, Black, White, Gray |
|  Ratio Marker | On, Off Mode: 4:3、 13:9、 14:9、 15:9、 16:9、 1.85:1、 2.35:1 Color: Red, Green, Blue, Black, White, Gray Modified Mark : 0~5 |












Display

| | |
|---|---|
|  Scan Mode | Under Scan, Over Scan |
|  Aspect Ratio | Auto, 16:9, 16:10, 4:3, 5:4, 1.85:1, 2.35:1, Full Screen |
|  Anamorphic | On, Off Mode: 1.33X, 1.6X, 2.0X, 2.0X MAG, User Under the User , can be customized (1.20X~2.00X) |
|  Image Flip | On, Off Mode: H Flip, V Flip, H_V Flip |
|  Zoom Mode | On, Off Mode: 2X、4X、9X、16X、User Under the User , can be customized (100%~200%) |
|  Image Freeze | On, Off |
|  P2P | On, Off |








User

| | |
|--|---|
|  LUT | On, Off After the LUT Switch is turned on, you can use the Lut (SLOG2, SLOG3, LOGC, VLOG) . Lut Import: Confirm After copying the 3D LUT file to the USB flash drive and inserting it into USB adapter cable (USB-female to mini-USB) press MENU button |
|--|---|

| | |
|---|--|
| | <p>Confirm to import the 3D LUT file.</p> <p>Lut Table</p> <p>Show the 4 built-in Lut and the custom load Lut (up to 32)</p> |
|  Display Adjustment | <p>Backlight: 0~100</p> <p>Brightness: 0~100</p> <p>Contrast: 0~100</p> <p>Saturation: 0~100</p> <p>Tint: 0~100</p> |
|  Color Adjustment | <p>Color Temp.: 5600K, 6500K, 9300K, User</p> <p>Under the User, the red, green and blue of the image can be adjusted (0~255)</p> |
|  Shortcut Key | <p>All Waves, Waveform, Vector, Histogram, Embedded Audio, Center Marker, Safe Frames, Nine Grid, Focus Assist, False Colors, Over Exposure, Anamorphic, Image Freeze, Check Field, Zoom, Image Flip, Aspect Ratio</p> <p>To set the 2 shortcut custom button F1, F2 on the panel</p> <p>e.g.: Press MENU button enter menu ,  /  ,  /  button select User and press MENU to confirm. Then  Shortcut Key and press MENU to confirm, select F1 and confirm to pop-up function items, then select one of them and press to confirm, the cursor will be changed to gray color after confirmed. Same setting for F2</p> |



System

| | |
|--|---|
|  Language | English、简体中文、Español、Português、Français、Nederlands、Deutsch、日本語、繁體中文、한국어로、 русский язык |
|  OSD Option | OSD Time: Off, 15Sec, 30Sec, 45Sec OSD Trans: Off, 25%, 50%, 75% No Signal: Red, Green, Blue, Black, White, Gray |
|  Volume | On, Off 0~100 |
|  Reset | Scroll the wheel to select Reset and press Confirm , the system back to original setting. |
|  Firmware Update | After copying the upgrade file to the USB flash drive and inserting it into USB adapter cable (USB-female to mini-USB), press “MENU” wheel button Confirm to update. After the upgrade, monitor will automatically restart. Note: USB adapter cable not include, need to prepare by user |

4. Support Signal Formats

| Signals | Support signal formats |
|---------|--|
| Video | PAL/NTSC auto recognize |
| HDMI | 480i /480p /576i /576p 720p(60/59.94/50/30/29/25/24/23.98) 1080i(60/59.94/50) 1080p(60/59.94/50/30/29.97/25/24/24sF/23.98/23.98sF) 4K UHD 3840×2160p (30/29.97/25/24/23.98 Hz) |

| | |
|-----|---|
| | DCI 4K 4096×2160p (24Hz) |
| SDI | 720p (60/59.94/50/30/29/25/24/23.98) 1080i (60/59.94/50) 1080p(60/59.94/50/30/29.97/25/24/24sF/23.98/23.98sF) |

5. Parameters

| | |
|---------------------|---|
| Panel Size | 7" IPS LCD×2 |
| Resolution | 1920 × 1200 pixels |
| Dot Pitch | 0.078758(W) x 0.07875 (H) mm |
| Aspect Ratio | 16:10 |
| Brightness | 450 cd/m ² |
| Contrast | 1100:1 |
| Viewing Angle | 80°/80°(L/R) 80°/80°(U/D) |
| Backlight | LED |
| Input Voltage | DC 9~24V |
| Input Signal | 3G-SDI (optional), HDMI, Video, Audio(L/R) |
| Output Signal | 3G-SDI (optional), HDMI, Video, Stereo Headphone |
| Power Consumption | ≤ 21 W |
| Special Function | TALLY indicator |
| Working Temperature | - 10~60℃ |
| Storage Temperature | - 30~70℃ |


| | |
|-------------|-------------------------------|
| Unit Size | 482.6 L × 130.0 H × 30.5 D mm |
| Unit Weight | ≈1890g |

6. Trouble Shooting

If there is any problem when using the unit, please try following ways to inspect and solve. Please contact us if you still can not solve it or have other problems.

• Without image display

Trouble shooting

| | |
|---|--|
| ◆ Video cable off or connect incorrectly | Check the quality of the cable, make sure the correct input interface |
| ◆ Without video signal input | Check the signal source and output interface connect is correct or not |
| ◆ Monitor is not be powered on | Check whether the power is connected, click “  ” button to confirm. |
| ◆ Supply voltage instability | The power adapter plug is poor connected with the socket |
| ◆ self-contained power supply, polarity connect inversely | Reference "Power Input Way" and reconnect |

• Image/color display abnormal Trouble shooting

| | |
|---|---|
| ◆ Video cable poor contact | Change the video cable, try again |
| ◆ Video signal interfered by external environment | Move to another environment to try again |
| ◆ Video input signal amplitude too low | Check signal source video output, or change signal source and have a try. |
| ◆ Menu color saturation adjustment closing | Enter menu to check color, or reset to factory settings |
| ◆ Check Field set in mono or black & white | Reset Check Field, back to the color |
| ◆ Image deformation | Reset the image ratio |

• Earphone without sound Trouble shooting

| | |
|--|--|
| ◆ Audio cable off or connection properly | Confirm connected with the corresponding input port |
| ◆ Volume adjustment was closed | Reset the volume control and adjust to a proper position. |
| ◆ HDMI cable poor Connected | Check the quality of cable, or change cable and have a try |
| ◆ No sound after switch video signal | Check whether there is an AUDIO signal input in AV Mode. |

■ **Remark:**

★If there are still other problems, please contact with our related technical persons.

★If there are changes without prior notice.