

---

## GeoBox Telnet Application Note

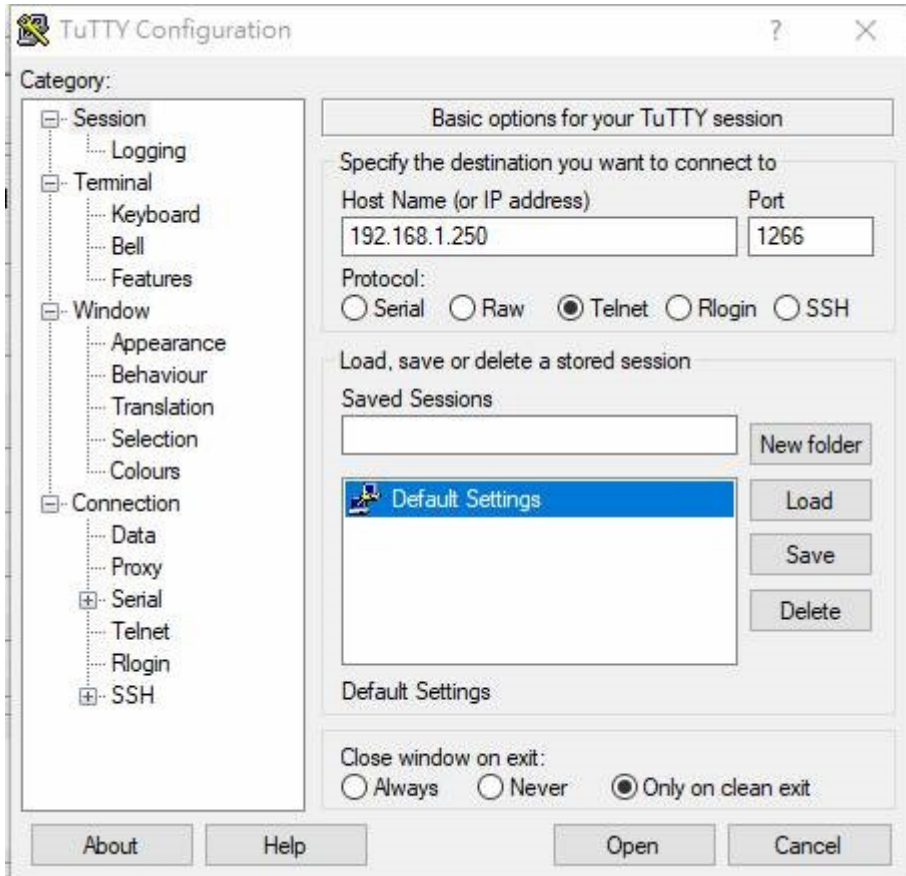
---

# 1 PURPOSE

This document describes the Telenet application between the GeoBox and a Computer (Client). The Protocol is based on a bidirectional interactive text-oriented communication facility using a virtual terminal connection. By using this protocol a Client will be able control the GeoBox over the Transmission Control Protocol (TCP)..

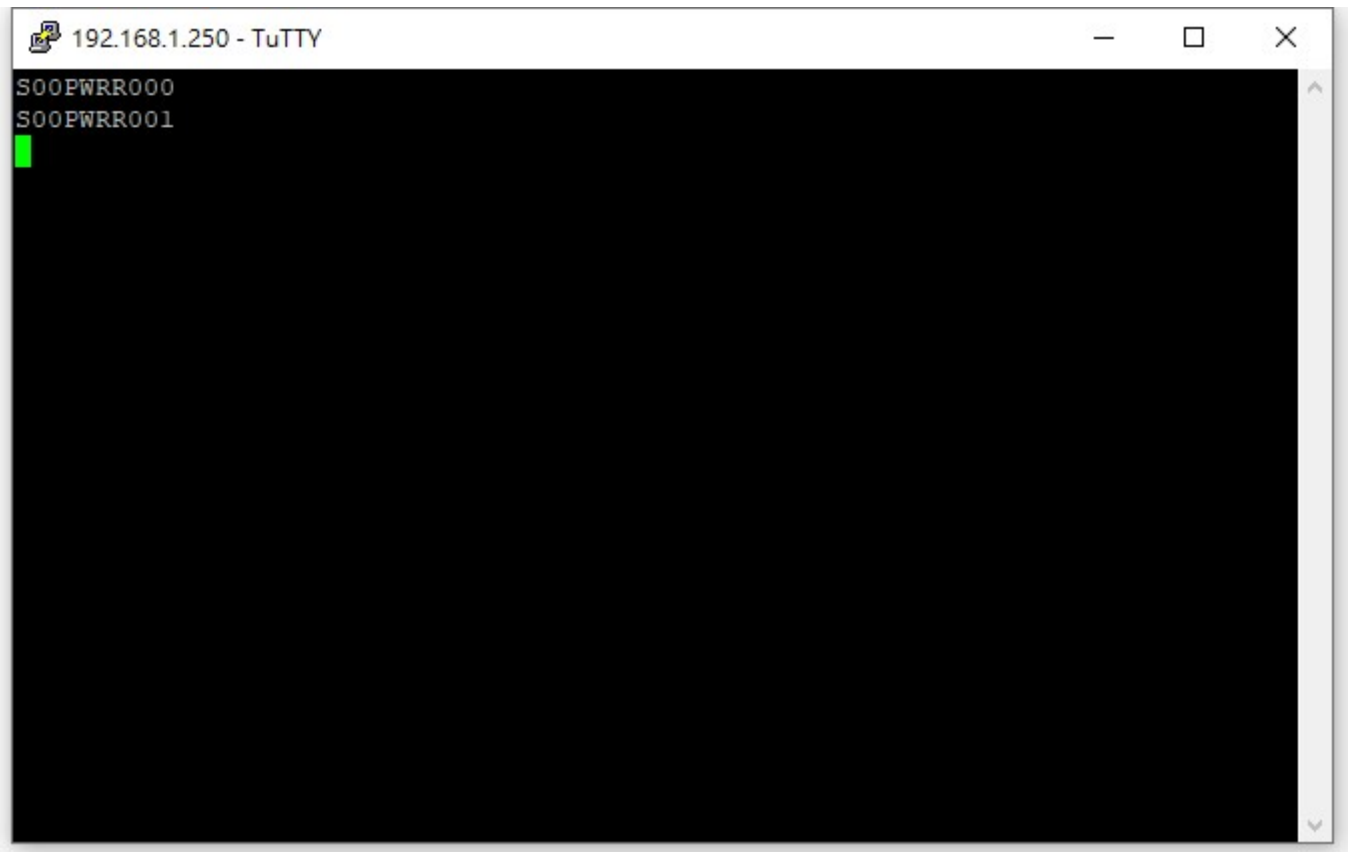
# 2 Connection

A user could establish a connection to GeoBox on TCP port 1266 as follows by using TuTTY as example:



---

An example on reading back GeoBox power status as following:



```
192.168.1.250 - TuTTY
S00PWRR000
S00PWRR001
█
```

The image shows a terminal window titled "192.168.1.250 - TuTTY". The window has a black background and contains two lines of white text: "S00PWRR000" and "S00PWRR001". A green cursor is visible on the line following "S00PWRR001". The window has standard window control buttons (minimize, maximize, close) in the top right corner.