



USER MANUAL

HDMI Matrix 4x2
(8K@60Hz)

Enjoy the vivid world

Introduction :

The HDMI 8K/60Hz matrix 4x2 can connect 4 HD signal sources to 2 HD display terminals, with stereo headphone output. The matrix allows four HDMI devices to be switched or split easily to two HDMI compatible monitors or projectors. And any output ports can realize independent audio output by stereo head phone.

Our devices offer solutions for noise, space and security concerns, data center control, information distribution, conference room presentation, school and corporate training environments.



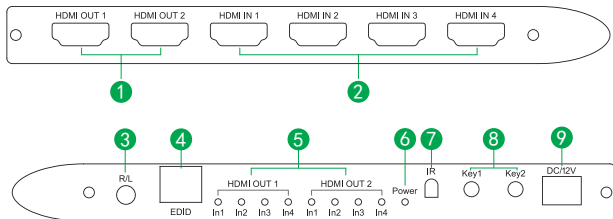
Features :

- * Support HDCP2.3;
- * Support HDR;
- * Support 3D video format;
- * Support 8K@60Hz;
- * Support audio outputs, 3.5mm earphone jack output;
- * 4 HDMI inputs switch and split to 2 HDMI displays;
- * HDMI output1 support 8K 60Hz .

Specifications:

HDMI resolution	up to 8K/60Hz
Support video format	8/10/12 bit deep color
Support audio format	LPCM/DTS/Dolby-AC3
Max baud rate	40Gbps
Input cable distance	4K/60Hz ≤5M;8K/60Hz ≤3M HDMI 2.1 standard cable
Output cable distance	4K/60Hz ≤5M;8K/60Hz ≤3M HDMI 2.1 standard cable
HDMI Input	4
HDMI Output	2
Max working current	600mA
Power adapter format	Input: AC (50HZ, 60HZ) 100V-240V; Output: DC12V/1A
Operating Temperature range	(-15 to +45 ℃)
Operating Humidity range	5 to 90%RH (No Condensation)
Dimension (L x W x H)	172x172x19 (mm)
Weight	456g

Physical interface diagram:



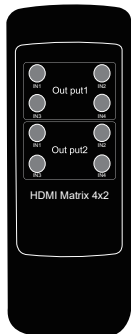
- | | |
|---------------------------------|--|
| 1: HDMI OUT1-2 --- HDMI output; | 5: HDMI OUT1→2 --- HDMI input indicator; |
| 2: HDMI IN1-4 --- HDMI input; | 6: Power --- Power indicator |
| 3: L/R --- Stereo output; | 7: IR --- IR Receive; |
| 4: EDID --- EDID management; | 8: Key1/2 --- HDMI output 1/2switching button; |
| | 9: DC/12V --- 12V power supply; |

EDID setting

Position 1	Position 2	Position 3	Position 4	Function
0	0	0	0	Copy the EDID of HDMI OUT 1
0	0	0	1	Copy the EDID of HDMI OUT 2
0	0	1	0	8K 60Hz 2 CH LPCM(Includes dial values not listed)

Noted: the dial switch to dial downward is 1, dial upward is 0.

The Remote Control instruction :

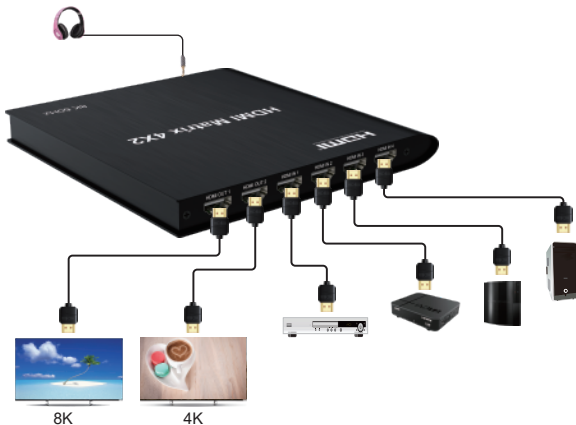


- 1) The four buttons on Output 1 is the corresponding input source IN1-IN4 which out from Output 1, IN1-IN4 can be switched freely.
- 2) The four buttons on Output 2 is the corresponding input source IN1-IN4 which out from Output 2, IN1-IN4 can be switched freely.

Instruction of Buttons and LED:

1. Instruction of LED: IN1-IN4 indicator is the corresponding input sources out from Output 1 or Output 2.
2. Operation of Buttons: Key 1 or Key 2 is used to switched the corresponding input source out from Output 1 or Output 2.

Connection Diagram :

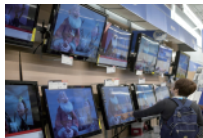


Operating and Connecting :

1. Connect each HDMI source devices and input of HDMI Matrix with HDMI cable.
2. Connect display devices and output of HDMI Matrix with HDMI cable.
3. Connect audio output and stereo amplifier with stereo headphone or fiber.
4. Connect 12V power supply to the HDMI 4x2 Matrix.
5. Use the IR remote or button control to switch the signal source freely.

Note: HDMI OUT1 supports up to 8K resolution; HDMI OUT2 supports up to 4K resolution.
The R/L port stereo audio extracts the HDMI OUT2 port signal.

Application scenario :



TV Store



Teaching room



Video Conference

Notes :

Pls use the machine as the instruction listed to keep the long use lifetime of the machine.

1. The machine should be placed at the spot far from the Damp, High-Temperature, Dusty, Erosive, and oxidative environment.
2. All parts will be free from the strong shake, hit, fall.
3. Touching the power adaptor with the wet hands is prohibited.
4. Pls hold the power adaptor head and do not pull the power cord when cut off from the socket.
5. Pls turn the power off when the machine is not used for long time.
6. Pls do not open the cover and do not touch the inside parts.
7. Pls use the original factory power adapter.

Accessories :

- | | | | |
|----------------------------|-----|------------------|-----|
| 1. HDMI 8K 60Hz Matrix 4X2 | 1PC | 3. Power adaptor | 1PC |
| 2. IR Remote Control | 1PC | 4. User Manual | 1PC |