



USER MANUAL

HDMI Matrix 2x4
(4K@60Hz)

Enjoy the vivid world

Introduction :

The HDMI matrix 2x4 can connect 2 HD signal sources to 4 HD display terminals with optical fiber or stereo headphone output. The matrix allows two HDMI devices to be switched or split easily to four HDMI compatible monitors or projectors. And any output ports can realize independent audio output by optical fiber or stereo head phone. (The audio can only be separated from the input of HDMI OUT1)

Our devices offer solutions for noise, space and security concerns, data center control, information distribution, conference room presentation, school and corporate training environments.



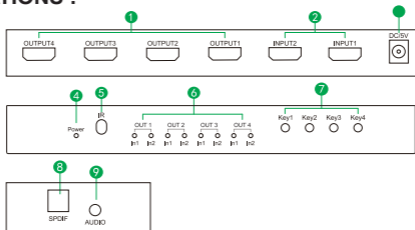
Features :

- * Support 3D video format
- * Support for 4K (input) resolution 2K (output) (Down scaler)
- * Support 2 HDMI audio outputs, 3.5mm earphone jack and optical output at same time
- * 2 HDMI inputs switch and split to 4 HDMI displays.
- * Support LPCM/Dolby/DTS 5.1 channel.

SPECIFICATIONS :

HDMI resolution	up to 3840*2160/60Hz
Support video format	8/10/12 bit deep color
Support audio format	LPCM/DTS/Dolby-AC3
Max bandwidth	600MHz
Max baud rate	3x6Gbps
Input cable distance	4K/30Hz ≤15M AWG26 HDMI standard cable 4K/60Hz ≤5M HDMI 2.0 standard cable
Output cable distance	4K/30Hz ≤15M AWG26 HDMI standard cable 4K/60Hz ≤5M HDMI 2.0 standard cable
HDMI Input	2
HDMI Output	4
Max working current	600mA
Power adapter format	Input: AC (50HZ, 60HZ) 100V-240V; Output: DC5V/1A
Operating Temperature range	(-15 to +45 °C)
Operating Humidity range	5 to 90%RH (No Condensation)
Dimension (L x W x H)	199x70x27 (mm)
Weight	300g

SPECIFICATIONS :



- | | |
|---------------------------------|---|
| 1: HDMI OUT4-1 --- HDMI output; | 5: IR --- IR Receive; |
| 2: HDMI IN2- 1 --- HDMI input; | 6: OUT1- 4 --- HDMI input indicator(IN1-IN2) |
| 3: DC/5V --- 5V power supply; | 7: Key1-4 --- HDMI outputs 1-4 switching button |
| 4: POWER --- Power Indicator; | 8: SPDIF ---Optical output |
| | 9: AUDIO --- Stereo output |

The Remote Control instruction :

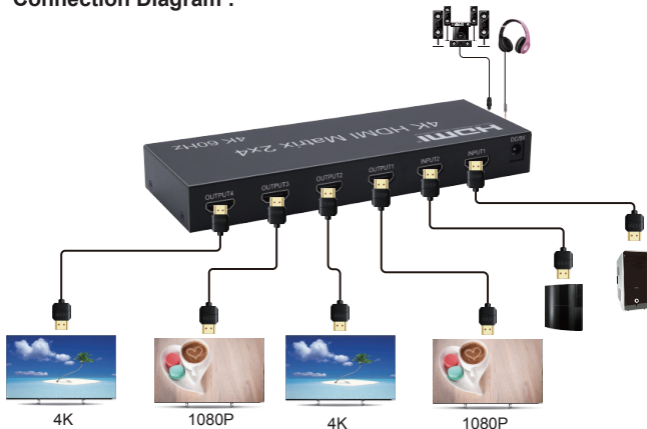


- 1) The two buttons on Output 1 is the corresponding input source IN1-IN2 which out from Output 1, IN1-IN2 can be switched freely.
- 2) The two buttons on Output 2 is the corresponding input source IN1-IN2 which out from Output 2, IN1-IN2 can be switched freely.
- 3) The two buttons on Output 3 is the corresponding input source IN1-IN2 which out from Output 3, IN1-IN2 can be switched freely.
- 4) The two buttons on Output 4 is the corresponding input source IN1-IN2 which out from Output 4, IN1-IN2 can be switched freely.

Instruction of Buttons and LED:

1. Instruction of LED: IN1-IN2 indicator is the corresponding input sources out from Output 1 or Output 4.
2. Operation of Buttons: Key1-Key4 is used to switched the corresponding input source out from Output (1-4)

Connection Diagram :

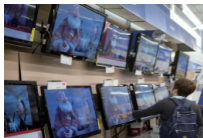


Operating and Connecting :

1. Connect each HDMI source devices and inputs of HDMI Matrix with HDMI cable.
2. Connect display devices and outputs of HDMI Matrix with HDMI cable.
3. Connect audio output and stereo amplifier with stereo headphone or fiber.
4. Connect 5V power supply to the HDMI 2x4 Matrix.
5. Use the IR remote control or button to switch the signal source freely.

NOTE: HDMI port and audio ports are connected according to user needs, not every port must be connected; but can't be reversed.

Application scenario :



TV Store



Teaching room



Video Conference

Notes :

Pls use the machine as the instruction listed to keep the long use lifetime of the machine.

1. The machine should be placed at the spot far from the Damp, High-Temperature, Dusty, Erosive, and oxidative environment.
2. All parts will be free from the strong shake, hit, fall.
3. Touching the power adaptor with the wet hands is prohibited.
4. Pls hold the power adaptor head and do not pull the power cord when cut off from the socket.
5. Pls turn the power off when the machine is not used for long time.
6. Pls do not open the cover and do not touch the inside parts.
7. Pls use the original factory power adapter.

Accessories :

- | | | | |
|----------------------|------|---------------------|------|
| 1. HDMI Matrix 2X4 | 1PCS | 3. 5V power adapter | 1PCS |
| 2. IR Remote Control | 1PCS | 4. User Manual | 1PCS |