

# UHD 4K2K Play&Back Capture Box

Record Videos and Play Back Instantly



# SAFETY PRECAUTIONS

Before using Play Back Box, please ensure that you read and understand the safety precautions below:

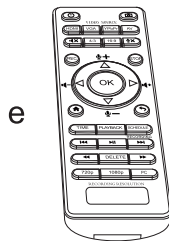
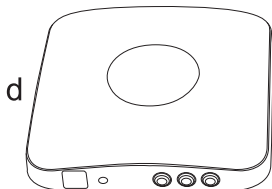
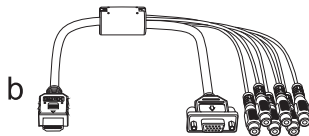
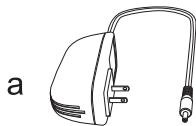
1. Do not attempt to open the case of Play Back Box, or modify it in any way, as this will void the warranty.
2. Keep Play Back Box, away from water and other liquids, as this may cause the unit to malfunction.
3. Play Back Box, may become warm during use. This does not indicate malfunction.
4. Do not place heavy objects on Play Back Box, as this may cause the unit to overheat and malfunction.
5. If the exterior of Play Back Box, requires cleaning, wipe it with a soft dry cloth.
6. Do not dispose of the unit via conventional domestic waste.

# CONTENTS

<b>Box Contents</b>	<b>1</b>
<b>Product Diagram</b>	<b>2</b>
<b>How to record videos to the USB storage device</b>	<b>6</b>
Install	6
Record/Capture	8
Playback	11
Setup	16
<b>How to record videos to PC</b>	<b>21</b>
Download and Install	21
Register	23
Record/Capture	26
Setup	29
<b>Frequently Asked Questions</b>	<b>31</b>
<b>Supported Resolutions</b>	<b>32</b>
<b>Product Specifications</b>	<b>33</b>
<b>Contact Us</b>	<b>34</b>



# BOX CONTENTS



**a. Power Adapter**

**c. Installation CD**

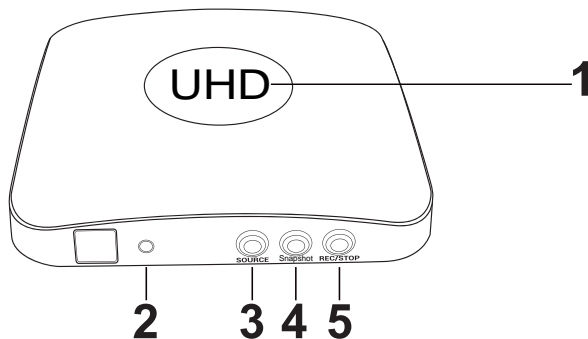
**e. Remote Control**

**b. MMI Cable**

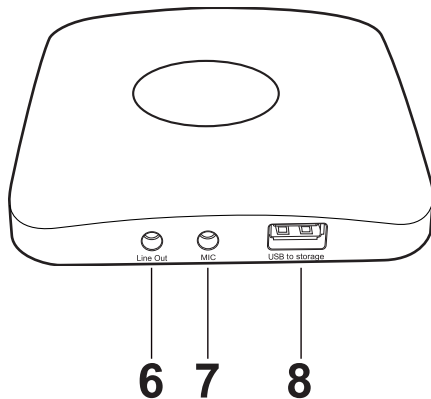
**d. Play Back Box ,**

**f. User Manual**

# PRODUCT DIAGRAM



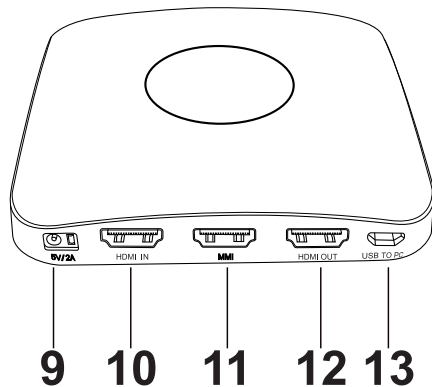
1. LED indicator light for recording. Blue means **Play Back Box** is recording videos in 1080p, while Green means it is recording videos in 720p or others.
2. When this light is on, it means **Play Back Box** is turned on.
3. SOURCE: Input signal button. HDMI, VGA, YPbPr and AV are available.
4. Snapshot: this button for **capture photo**. (can't capture photo when you using recording videos)
5. REC/STOP: Press this button to start/stop recording.



6. Line Out: Audio output interface.

7. MIC: MIC input interface.

8. USB storage: The interface which the USB storage device is plugged into.



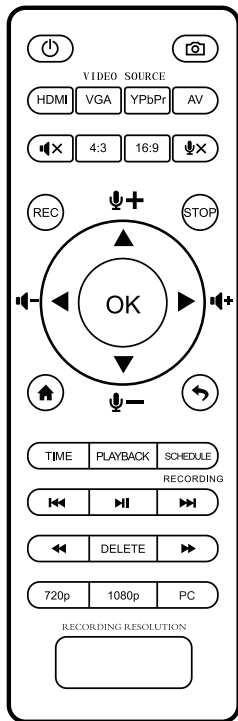
9. 5V/2A: Power adapter interface.

10. HDMI IN: HDMI input interface.

11. MMI: VGA/AV/YPbPr cable interface.

12. HDMI OUT: HDMI output interface.

13. USB to PC: USB interface for connecting the computer. This function must be realized together with HDML-Cloner Pro Helper.



- : Power on/Power off.
- : Capture an image.
- : Select HDMI as the input signal.
- : Select VGA as the input signal.
- : Select YPbPr as the input signal.
- : Select AV as the input signal.
- : Mute
- : Switch to the aspect ratio of 4:3.
- : Switch to the aspect ratio of 16:9.
- : Microphone mute.
- : Start recording.
- : Stop recording.
- : OK button.
- : Adjust the volume of the source video.
- : Adjust the volume of MIC input.
- : Show the main menu.
- : Back to the previous interface.
- : Set the system time by year, month, day, hour, minute and second.
- : Play back the contents in the USB storage device.
- : Set the Start Time and Stop Time manually during which videos will be recorded automatically.
- : Back to the previous page.
- : Play or stop playing.
- : Go to the next page.
- : Fast backward
- : Delete the recorded video.
- : Fast forward
- : Set the output resolution to 720p.
- : Set the output resolution to 1080p.
- : Select the output resolution for PC, including 1024\*768, 1280\*800 and 1360\*768.



# HOW TO RECORD VIDEOS TO THE USB STORAGE DEVICE

## 1. Install

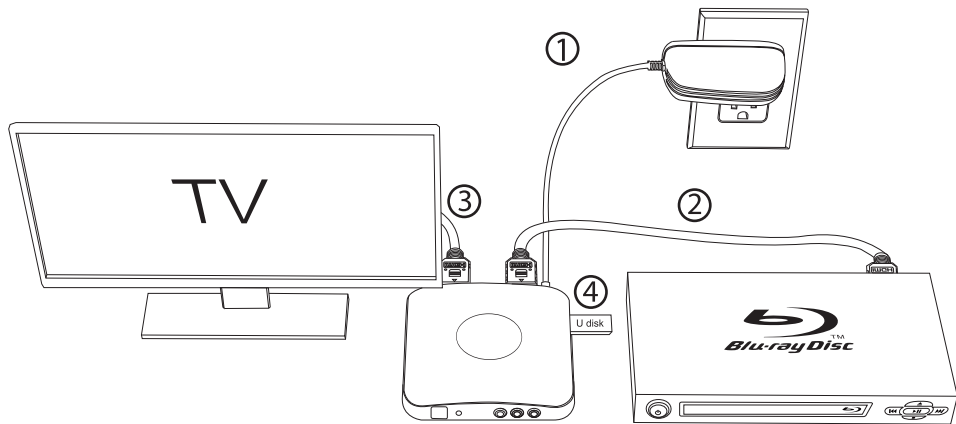
(1) Plug the power adapter into the power socket and plug the other end into the 5V/2A port of Playback Box

(2) Connect the input device (PS3, PS4, Blu-ray player, etc) to HDMI IN on Playback Box via an HDMI cable.

**Note: If you want to connect devices via the VGA/AV/YPbPr cable, please connect the input device to MMI port on Box .**

(3) Connect Playback Box from HDMI OUT to TV via an HDMI cable.

(4) Plug the USB storage device into the USB port of Playback Box



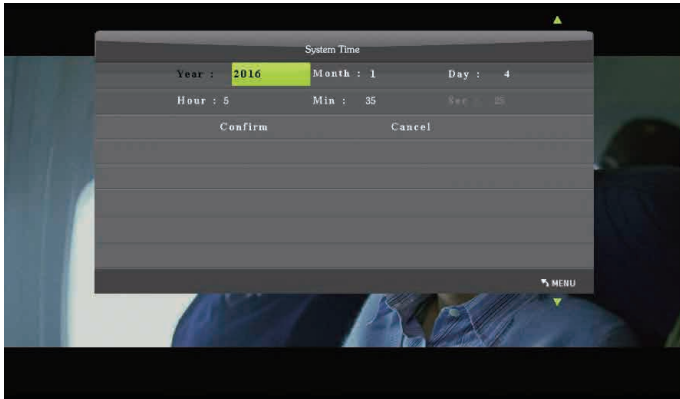
## **2. Record/Capture**

- (1) After all devices are connected properly, please switch on the power of Play Back Box.
- (2) Insert a video disc into the drive of the input device and play the video.
- (3) Plug the USB storage device to the USB port of Play Back Box.
- (4) Press the REC/STOP button on the capture box or press the REC button on the remote control to start recording.
- (5) After recording for a period of time, press the REC/STOP button again on the capture box or press the STOP button on the remote control to stop recording.

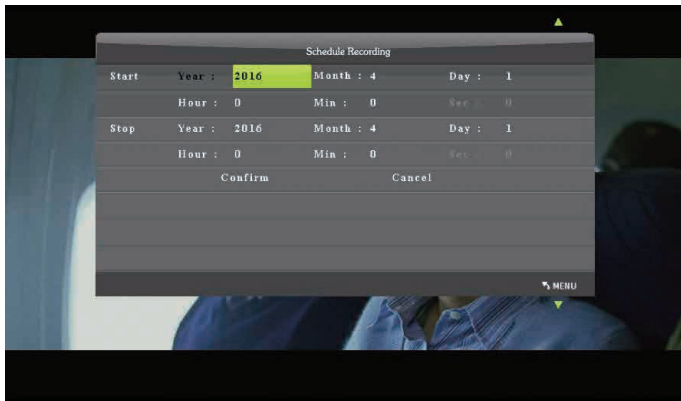
**NOTE: The recorded video will be split into several 2GB files.**

**NOTE: Box can also prerecord videos at the scheduled time. After connecting devices properly, follow the steps below:**

- (1) Press the TIME button on the remote control. Set the system time by using the four buttons of volume control on the remote control. After setting, select Confirm and then OK to save the setting.



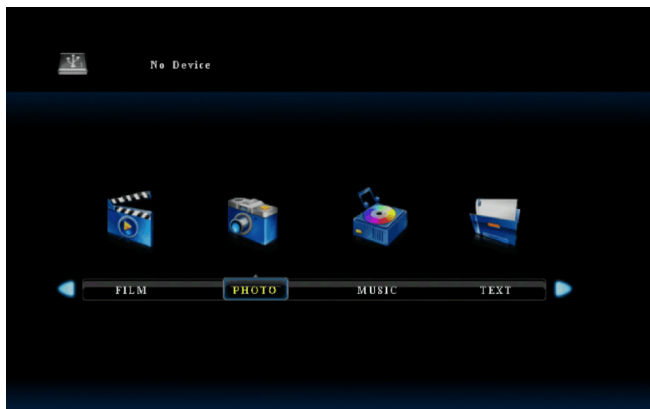
(2) Press the SCHEDULE button on the remote control. Set the Start Time and Stop Time by using the four buttons of volume control on the remote control. After setting, select Confirm and then OK to save the setting.



(3) After finishing the setup, press the menu button on the remote control and return to the playback interface. Then Box will record videos automatically during the scheduled time period.

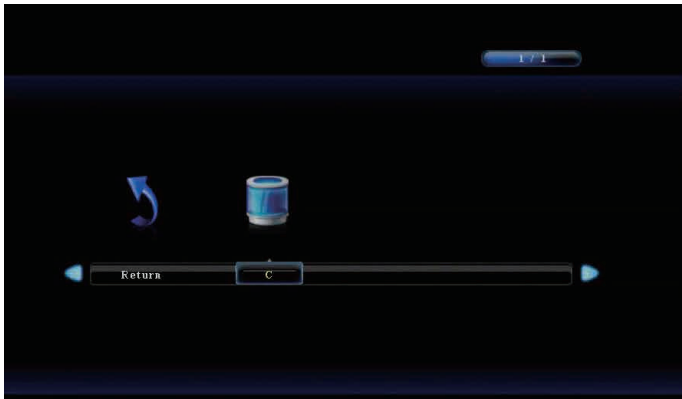
### 3. Playback

(1) After all devices are connected properly, plug the USB storage device into HDML-Cloner Box Pro and press the PLAYBACK button on the remote control to enter the playback menu interface.



There are four categories, which are PHOTO, MUSIC, FILM and TEXT.

(2) Select one category and press OK to go to the next step. Then you can select a partition.



(3) You will see the file list.



Select your desired file by using the four buttons of volume control on the remote control. You can preview the files and press OK to select multiple files.






(4) Press



on the remote control to play the selected video(s).



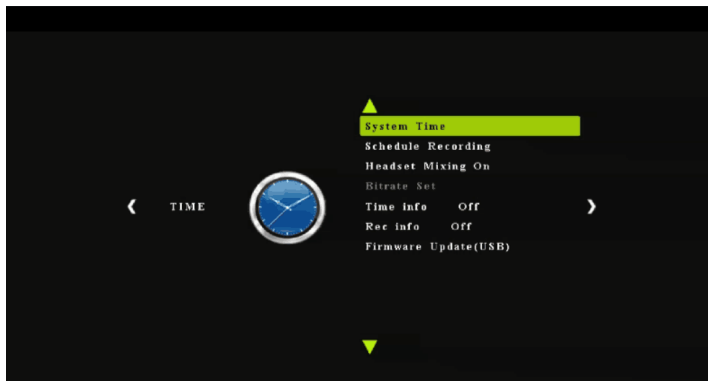
## 4. Setup

Press  on the remote control to browse the menu settings of Play Back Box, which are TIME, PICTURE, SOUND and OPTION.

Under the TIME column, there are four aspects: System Time, Schedule Recording, Recording Resolution and Software Update.

Bitrate Set(LOOP REC,LIMITED 10M,LIMITED 16M,UNLIMITED 6M,UNLIMITED 10M,UNLIMITED 16M)

And Time info water mark/Rec info water mark



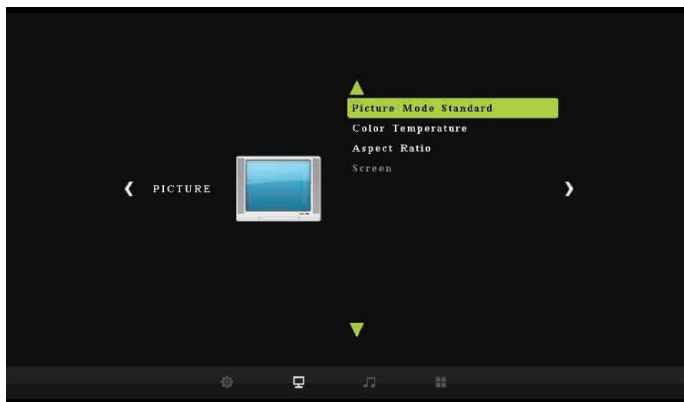
**System Time:** Set the time of Play Back Box.by year, month, day, hour, minute and second.

**Schedule Recording:** Set the Start Time and Stop Time during which videos will be recorded automatically.

**Recording Resolution:** Set the output resolution. High, Middle and Low are available.

**Software Update:** Upgrade the firmware when there is a new version available. You need to plug the USB storage device into Play Back Box.

Under the PICTURE column, there are three aspects: Picture Mode, Color Temperature and Aspect Ratio.

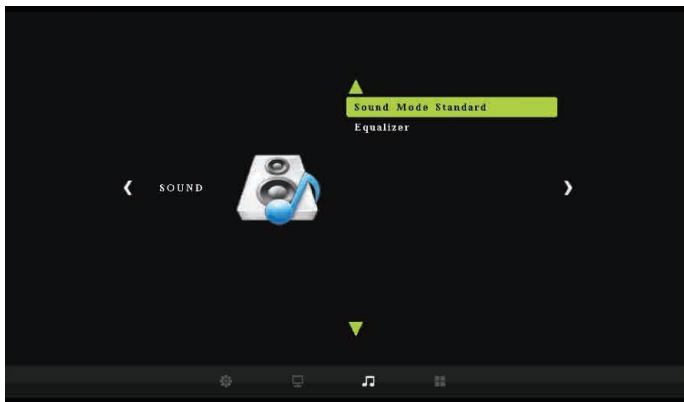


**Picture Mode:** Mild, User, Dynamic and Standard are available.

**Color Temperature:** Medium, Warm, User and Cool are available.

**Aspect Ratio:** Auto, 4:3, 16:9, Zoom 1, Zoom 2 and Just Scan are available. The default state is 16:9.

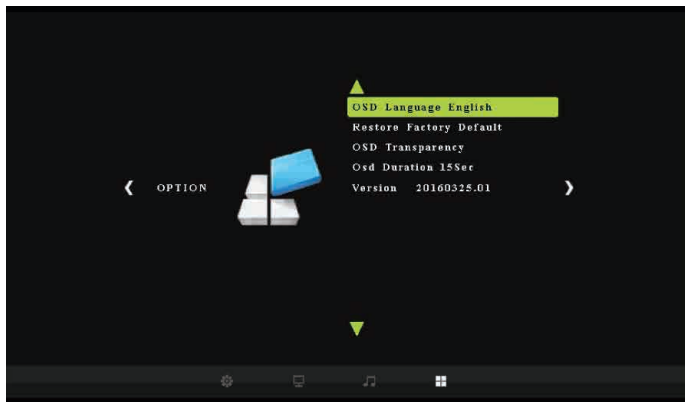
Under the SOUND column, there are two aspects: Sound Mode and Equalizer.



**Sound Mode:** Standard, Music, Movie, Sports and User are available.

**Equalizer:** 120 Hz, 500 Hz, 1.5 KHz, 5 KHz and 10 KHz are available.

Under the OPTION column, there are five aspects: OSD Language, Restore Factory Default, OSD Transparency, OSD Duration and Version.



**OSD Language:** Set the language to be displayed on the menu. English, Japanese, Simplified Chinese and Traditional Chinese are available.

**Restore Factory Default:** Restore the factory settings.

**OSD Transparency:** Set the transparency of the menu. High, Middle, Low and OFF are available.

**OSD Duration:** Set the duration of menu display. 5s, 10s, 15s and OFF are available.

**Version:** Shows the current version info.

# HOW TO RECORD VIDEOS TO PC

## **1. Download and Install**

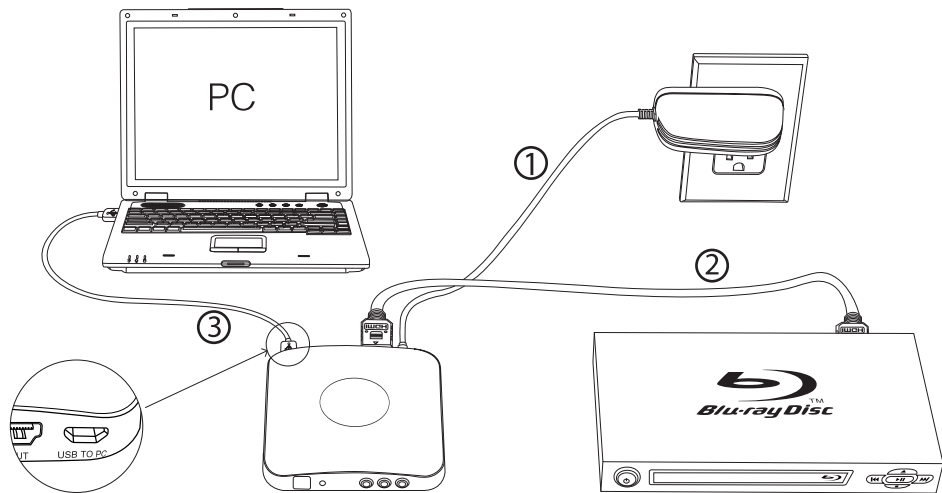
### **<1> Install HDML-Cloner Pro Helper**

the installation CD. After the installation, please restart your computer first before using.

### **<2> Connect the devices**

- (1) Plug the power adapter into the power socket and plug the other end into the 5V/2A port of Play Back Box.
- (2) Connect the input device (PS3, PS4, Blu-ray player, etc) to HDMI IN on Play Back Box.via an HDMI cable.
- (3) Connect the USB cable of the phone between the USB to PC port of Play Back Box.and the USB port of PC.




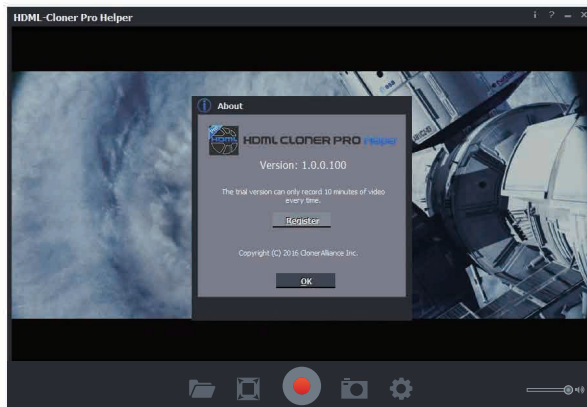


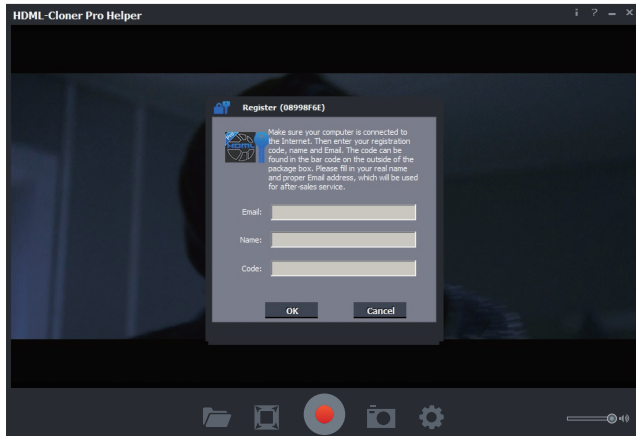
(4) Switch on the power of Play Back Box.

## 2. Register

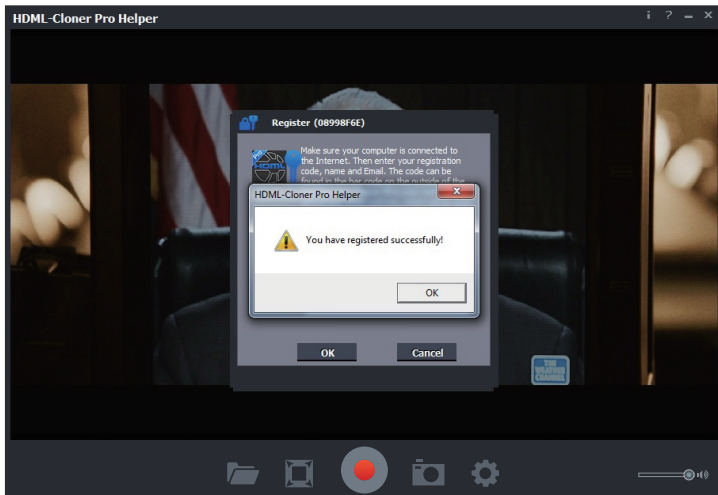
Please register HDML-Cloner Pro Helper first before using, otherwise it can only record 10 minutes of video.

Run HDML-Cloner Pro Helper. Click  on the main interface to open the "About" window. Then click on the "Register" button to open the "Register" window.



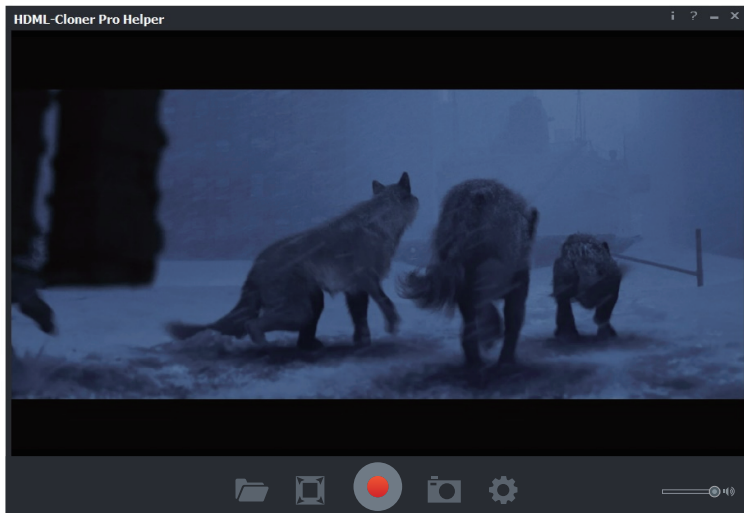


Fill in your proper Email address, real name and code (The code can be found in the bar code on Play Back Box.). Then click on "OK" to finish the registration.



### 3. Record/Capture

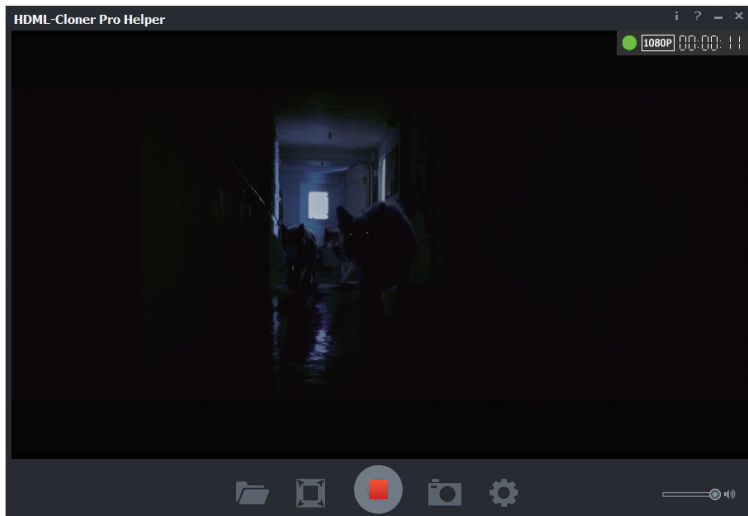
(1) After all devices are connected properly, insert the video disc into the drive of the input device and run HDML-Cloner Pro Helper.



(2) Click on



to start recording.



(3) Click on



to stop recording. Then click on



to view the recorded video.

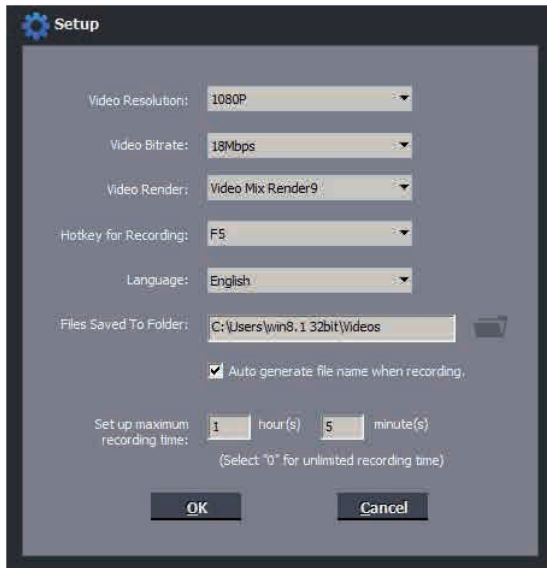
You can click on



to play back the recorded video.



## 4. Setup



The screenshot shows a 'Setup' dialog box with a gear icon in the top-left corner. The dialog contains several configuration options, each with a label and a control element. The controls include dropdown menus for Video Resolution, Video Bitrate, Video Render, Hotkey for Recording, and Language. A text field for 'Files Saved To Folder' is accompanied by a folder icon. A checkbox is checked for 'Auto generate file name when recording'. The 'Set up maximum recording time' section features two spinners for hours and minutes, with a note below them. At the bottom are 'OK' and 'Cancel' buttons.

**Setup**

Video Resolution: 1080P

Video Bitrate: 18Mbps

Video Render: Video Mix Render9

Hotkey for Recording: F5

Language: English

Files Saved To Folder: C:\Users\win8.1 32bit\Videos

☒ Auto generate file name when recording.

Set up maximum recording time: 1 hour(s) 5 minute(s)  
(Select "0" for unlimited recording time)

OK Cancel



**Video Resolution:** Set the output video resolution. 1080p, 720p and 480p are available.

**Video Bitrate:** 6Mbps, 8Mbps, 10Mbps, 12Mbps, 15Mbps and 18Mbps are available.

**Video Render:** Define the video render. Video Mix Render9 and Internal YUV Render are available.

**Hotkey for Recording:** Set the hotkey for starting and stopping recording videos.

**Language:** Set the language to be displayed on the interface. English, Japanese, Simplified Chinese and Traditional Chinese are available.

**Files Saved to Folder:** Displays the saving path of recorded videos. You can change the saving path by clicking on the folder button.

**Automatically generate the file name when recording starts:** If this option is selected, the titles of recorded videos will be named automatically.

**Set up maximum recording time:** Set the maximum recording time. If the recording time exceeds the set value, HDML-Cloner Box Pro will stop recording videos.

**OK:** Click to save the settings.

**Cancel:** Click to exit the "Setup" window without saving the settings.


# FREQUENTLY ASKED QUESTIONS

## 1. How to upgrade the firmware of Box?

(1) Download the latest version of the Web Unzip the firmware package and you will get the file.

Copy the file to the USB storage device by inserting it onto the computer.

(2) Plug the USB storage device into Play Back Box

(3) Press  on the remote control and select TIME – Software Update and then press OK.

(4) Select Yes on the pop-up window and then it is in the process of upgrading automatically. When reaching to 100%, Play Back Box will reboot and then the upgrade is completed successfully.

**Note:** In the process of upgrading when connected to a computer, HDML-Cloner Pro Helper also needs to be restarted after the capture box reboots.

## 2. Which file formats are supported for playback?

**Image formats:** BMP, JPG, PNG

**Audio formats:** MP3, WAV, FLAC, AAC, M4A (AAC encoded)

**Video formats:** MP4, AVI, VOB, MKV, MOV, MPG (Video codec: MPEG-2, MPEG-4, H.264, VC-1, HEVC)

**NOTE:** Videos can be played back normally only when the image format, audio format and video format of a video meet the above requirements simultaneously.

**Text formats:** TXT

# SUPPORTED RESOLUTIONS

Input	4K * 2K(3840x2160 30p) 1920x1080 (50p), 1920x1080 (60p), 1920x1080 (24p) 1920x1080 (25p), 1920x1080 (30p), 1920x1080 (50i) 1920x1080 (60i), 1360x768 (60p) 1280x1024 (60p), 1280x720 (60p), 1280x768 (60p) 1280x800 (60p), 1024x768 (60p) 720x480 (60i), 720x480 (50i), 640x480 (60p) 720x480 (60p), 720x576 (50p)
Output	1920x1080 (60p), 1280x720 (60p), 1360x768 (60p) 1280x800 (60p), 1024x768 (60p)
Recording	1920x1080 (30p) 1280x720 (60p) 1024x768 (60p) 1360x768 (60p), 1280x800 (60p)
PC Recording	1920x1080 (30p), 1280x720 (60p), 720x480 (60p)

# PRODUCT SPECIFICATIONS

Output format	MP4 (H.264)
Video standards (input)	NTSC, PAL, PAL-60
Supported recording formats	FAT32, NTFS
Input signals	HDMI, VGA, YPbPr, AV Audio L/R, MIC, Line Out
Output signals	HDMI (pass-through), USB, Micro USB to PC
Bitrate	Max: 18Mbps
Recording capacity	Maximum 2GB per file
Maximum storage capacity	2TB
Power supply	DC 5V, 2A
Weight	7.1 oz
Dimensions	4.3 x 4.3 x 0.6 inches
Supported file formats for playback	<p><b>Image formats:</b> BMP, JPG, PNG</p> <p><b>Audio formats:</b> MP3, WAV, FLAC, AAC, M4A (AAC encoded)</p> <p><b>Video formats:</b> MP4, AVI, VOB, MKV, MOV, MPG (<b>Video codec:</b> MPEG-2, MPEG-4, H.264, VC-1, HEVC)</p> <p><b>NOTE: Videos can be played back normally only when the image format, audio format and video format of a video meet the above requirements simultaneously.</b></p> <p><b>Text formats:</b> TXT</p>