

Dual HD DVB-T2 USB Stick

T232



User's Guide

MyGica®

T232 User's Guide

Chapter 1 Overview

Important Notice: “All channels are subject to coverage and may be changed from time to time. Reception may depend on the type and condition of your existing aerial. Aerial upgrade may be required. Please confirm coverage in your area.” We strongly recommend that you install an outdoors antenna when you use the DTV receiver indoors.

Note:

- 1. Terrestrial digital wireless broadcast signal may be affected by topography, objects and weather. This would cause a poor signal quality. Therefore, we strongly suggest you to use a rooftop antenna when received indoors.**
- 2. This product is moveable but not be suitable of using in a high speed moving environment. Please check other associated products for these requirements.**
- 3. When you use the function of pre-recording, real time recording, or time shifting, please make sure you have enough hard disk space to save huge recording data.**
- 4. In order to operate properly, please follow the user manual and suggestive setup. Improper operations may cause the system unstable or crash. Before you remove hard disk devices, please check other related application has been closed.**

We reserves the right to add or delete the application and its functions; all new release drivers and application will be mentioned in our website. We are not responsible for further notice

1.1 Introduction

- Decoder setting
- Recorded TV location
- Schedule Recording
- Channel setting
- Menu Description(right click mouse)
- HiDTV description
- Video Recording
- Recorded file playback
- Snapshot
- Preview
- Time-shifting function
- EPG
- Video Windows description
- PIP

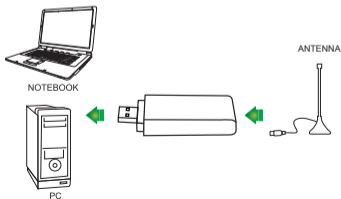
1.2 System requirements

- Windows:Microsoft Windows7/8/10, 4GB RAM
- MAC:OS X 10.9 or later
- Minimum processor: Minimum processor: Quad core i5 7400 3.0Ghz or faster

Note: If your PC is not fast enough, you might see jerky live TV video, but your TV recordings will be fine.

Sound and graphics with support for DirectX 9 or higher

2.1 Hardware Connection



Chapter 2 How to install driver and software

Windows Driver and Software download link: www.mygica.com/support

MAC Software download link: <https://www.geniatech.eu/support/eyetv-3-en/>

3.1 Driver Installation

Step1: OS will remind a new hardware-- "New Hardware Device" was found. Please choose "Cancel"

Step2: Open the windows driver file which you downloaded from website, and click setup.exe to install driver

Step3: Click "Next" to continue installation

Step4: Click Install to begin the installation.

Step5: Click "Finish" to completely install the Driver Software.

3.2 Software installation

Step6: Click "HiDTV Install",

Step7: Installation of HiDTV, Choose setup language

Step8: Click "Next" to continue installation

Step9: If you want to change the destination folder, please click "Browse" and click "next"
(Recommended is better)

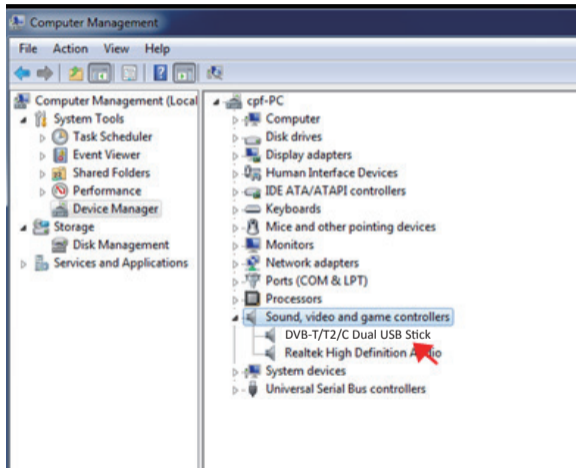
Step10: Please click "Next"

Step11: Click "Finish", the Hidtv software is installed on your computer.

Step12: You will see that HiDTV application icons will appear on your desktop.



Step13: When its finished, please check on Control panel, select “System”—“System properties”—“Device Manager”, you can see three devices which new driver is installed.



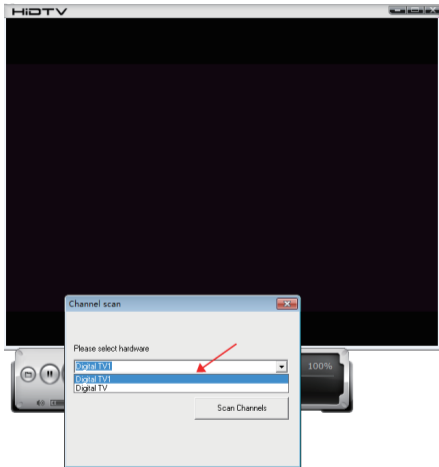
HiDTV user interface

Welcome to HiDTV. A most powerful multimedia application that allows you to access and work with Digital TV, recorded TV Programs, Radio from your PC and Laptop. It supports multi channels preview and recording at same time.

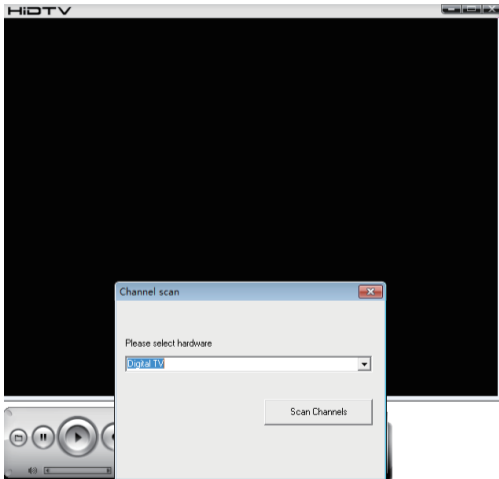


1	Minimize window
2	Full screen/window switch
3	Exit HiDTV software
4	Playback (time-shifting,) Recorded file playback
5	Video: record the current playing audio and video to the special image files
6	Stop: stop the current video program stop the current replay video files stop auto scan channels
7	Channel edit: Scan channel automatically rename the current channel, add favorite channel
8	Current input source or channel name display
9	Hardware description
10	Signal strength display window
11	Setting: Record file format setting Hardware setting Recorded file location setting. Schedule Recording setting
12	EPG: open HiDTV EPG window
13	Available channel list
14	Volume adjustment
15	Mute:
16	Time-shifting and pause of playback:
17	Recorded file playback

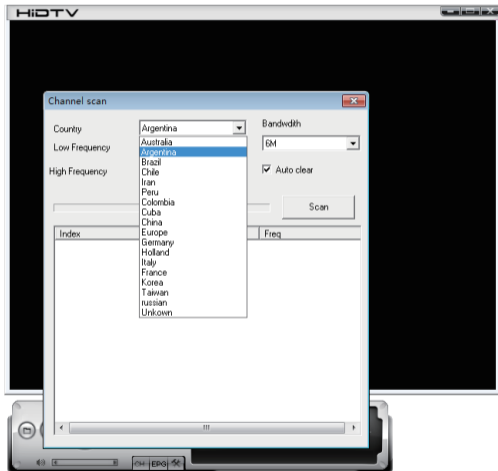
1. Please double click HIDTV.exe software, then click on the menu, as we know the device has dual tuner, you can choose one of tuner as following image showed.



2. Click " scan channels" to scanning channel



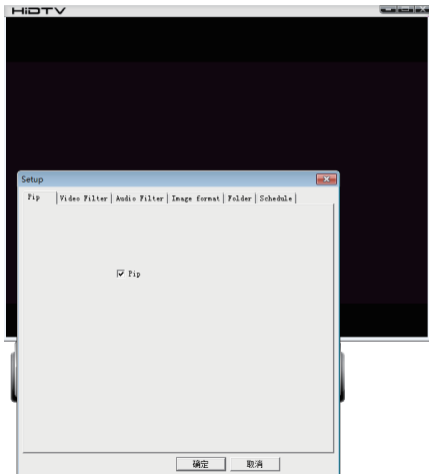
3. Select country and bandwidth, then, click "Scan" to scanning channels.



4. Choose to stop and play after the channels been scanned.



5.It can be realized that you can watch TV channels while you do recording of different channel.
1.Choose "Setup" to select "PIP"



6. Right-click on the screen to select Digital TV and Digital TV1



7. Select 1 tuner to do record.



Frequency Ask Question (FAQ)

1. Can not lock any program channel when auto scan

1. Please check if there is DVBT2/T broad casting program in your area;
2. Please check if your signal condition is too weak, try to move the antenna around and re-scan again, it is better to move the antenna near the window
3. Please check you connect the antenna and tightly
4. Please check you select right country in the HidTV software scan function page.
5. Please try to use an outdoor antenna and scan once more.

2. I do find some channels,, but this time I get fewer channels than last time

1. Maybe you moved antenna's position or angle, try to find the better position and keep the antenna vertical
2. The weather also can also affect your receiving signal quality, if the weather is bad today, that is the reason
3. In some new start DVBT2/T broadcasting area, the provider of DVBT2/T broadcasting, may change their broadcasting power from day to day, try to find a best power strength.
4. If you put a CAN of cola on the antenna, that will make signal weak, please move them away.

3. Video playing but Audio failed

Please check the sound card or the volume setting.

4. Watching TV some time freeze or slow, also audio stroke

1. Please check your PC is not Pentium 3 or 2, DVB-T2/T TV STICK need a high CPU to decoding DVBT stream
2. Please check you VGA driver is properly installed and updated
3. Please don't run another high CPU loading software such as game and CAD.