

## USB 3.0 4K Docking Station

- ✓ Dual Monitor Support
- ✓ Supports BC 1.2 charging for fast charging your compatible devices
- ✓ DP or HDMI™ resolution up to 3840 x 2160@30Hz
- ✓ DVI resolution up to 2048 x 1152
- ✓ Compatible with USB 3.0/2.0 specification
- ✓ Audio 2.1 channel connection 3.5mm Jack
- ✓ Microphone connection 3.5mm Jack
- ✓ Supports Gigabit Ethernet 10/100/1000
- ✓ 3 x USB 3.0 output ports
- ✓ Supports Windows, Mac OSX, Android, Ubuntu and Chrome



## Introduction

The USB 3.0 3 to 2 4K Docking Station is designed for extra connectivity demands. With the docking station, you can extend the connection of a computer to more USB peripherals, Ethernet network, the speaker and the microphone through one single USB cable.

With the built-in USB 3.0 ports, the docking station enables you to enjoy the super speed data transmission between USB peripherals. Aside from USB 3.0, this product is compliant with USB 2.0/1.1 specification. You will be able to keep and use your USB 2.0/1.1 devices as usual.

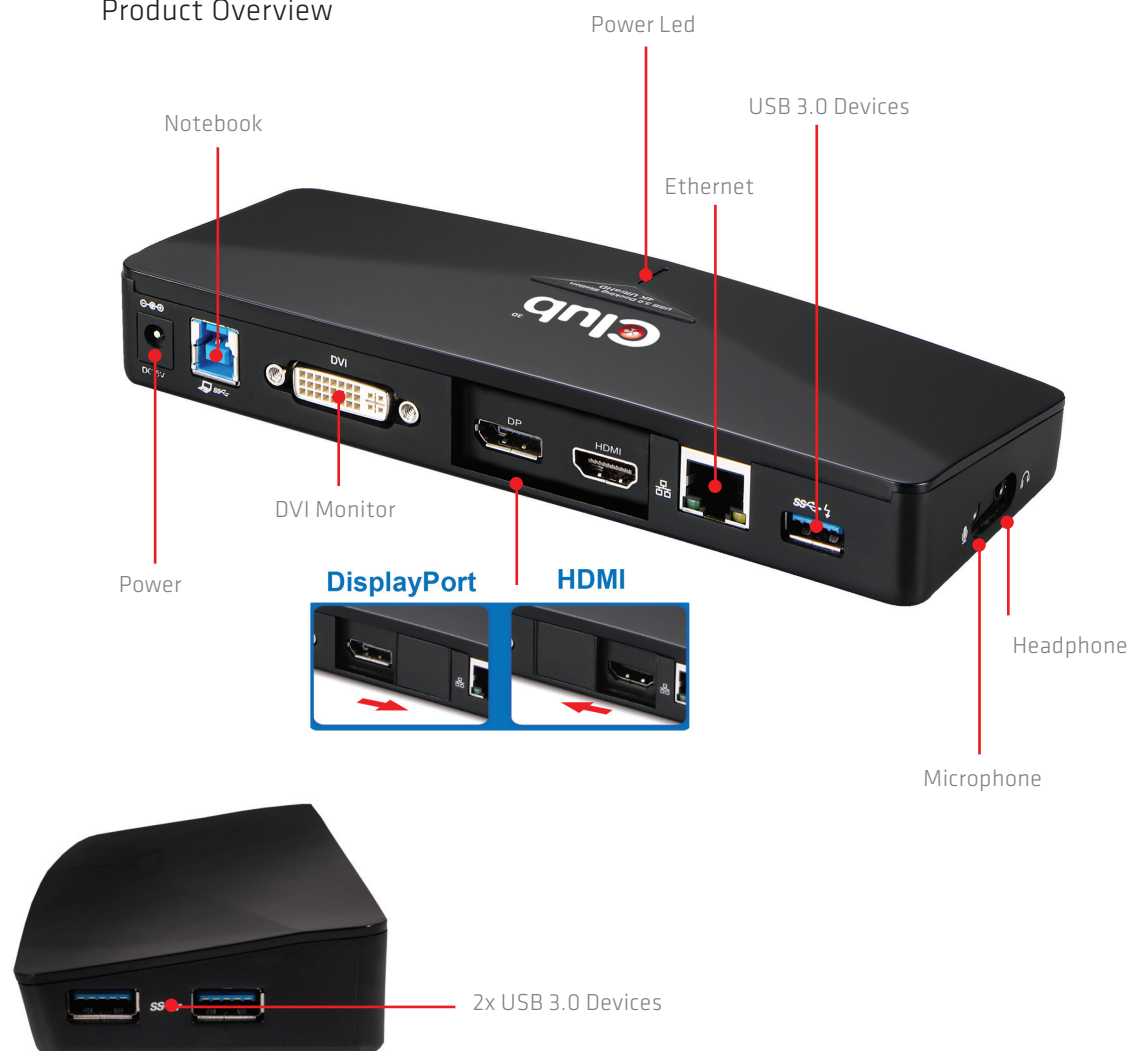
In addition, the docking station is equipped with video output. With the DVI, HDMI and DP ports, you can mirror your primary screen, or extend the Window desktop allowing visibility of more applications at the same time. Enhanced expansion capability plus the stylish appearance, this docking station with video is the most versatile accessory that also complements your home or office space.

- Incorporates HDMI® technology

**NOTE:** The DP and HDMI connectors can only be used one at a time. Slide the lid in front of the two connectors to uncover the connector you want to use and connect it to the monitor. For example, to use the HDMI connector, slide the lid to the front of the DP connector to uncover the HDMI connector, and then connect it to the HDMI monitor.

Please note that when using the DP (or HDMI) and the DVI connector simultaneously, the DP (or HDMI) connector will not be able to reach 4K resolutions.

## Product Overview



## Package contents

Before installation, check the items in the package. The package should contain the following items:

- USB 3.0 3 to 24K Docking Station x1
- USB Cable x1
- Power Adapter x1
- CD(Driver and User's Manual) x1

## Features

- USB3.0downstreamportx3
- Downward compatible with USB 2.0/1.1
- One USB port supports BC 1.2 charging
- DisplayPort
- DP/HDMI: resolution up to 3840x2160 pixels \*
- DVI: resolution up to 2048x1152 pixels
- Supportaudio2.1channel
- SupportGigabitEthernet

NOTE: Please note that when using the DP (or HDMI) and the DVI connector simultaneously, the DP (or HDMI) connector will not be able to reach 4K resolutions.

## System Requirements

- OperatingSystems:
- Microsoft: Windows® 7 SP1 or later/ Windows® 8/ Windows® 8.1

## Specification

CONNECTOR	VIDEO OUTPUT	DP/HDMI FEMALE CONNECTOR
		DVI FEMALE CONNECTOR
CONNECTOR	HOST UPSTREAM LINK	USB B TYPE FEMALE CONNECTOR
	HUB DOWNSTREAM LINK	USB A TYPE FEMALE CONNECTOR (USB 3.0 x3, with BC1.2 x1)
	AUDIO PORT	3.5MM STEREO MINI-JACK
CONNECTOR	ETHERNET PORT	RJ45 CONNECTOR
	POWER	DC POWER JACK
VIDEO	RESOLUTION	DP/HDMI: 3840X2160*
		DVI: 2048X1152
VIDEO	COLOR DEPTH	16 BITS AND 32 BITS
	CHANNEL	2.1 CH
ETHERNET	TYPE	10/100/1000 BASE-T
POWER	POWER MODE	SELF-POWERED
	POWER ADAPTER	INPUT:AC 100-240V
		OUTPUT: DC 5V/4A
PHYSICAL PROPERTIES	HOUSING	PC + ABS (Plastic)
	DIMENSION	189.1(L) x 74.49(W) x 26.32(H)mm
WORKING ENVIRONMENT	OPERATION TEMPERATURE	10-40 DEGREE
	STORAGE TEMPERATURE	20-70 DEGREE
COMPLIANCE		CE,FCC

\* The DP and HDMI connectors can only be used one at a time. Slide the lid in front of the two connectors to uncover the connector you want to use and connect it to the monitor. Please note that when using the DP (or HDMI) and the DVI connector simultaneously, the DP (or HDMI) connector will not be able to reach 4K resolutions.

## Installation

**Caution: DO NOT** connect the docking station to a computer before installing the provided driver. Note that the screenshots on this user's manual may vary slightly from each operating system. Windows® 7/ Windows® 8/ Windows® 8.1

1. Insert the provided CD into your disc drive.
2. Click Run Autorun.exe to start the installation.

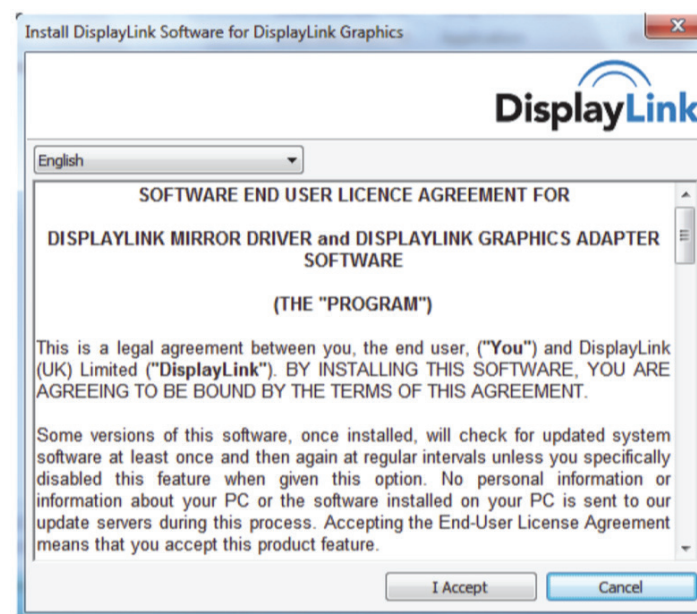


## NOTE:

If the AutoPlay does not appear automatically, locate and double-click on the Setup.exe file in the driver folder to launch the setup.

Enter the administrator password and then click Yes to start the installation if a User Account Control dialog box appears.

3. Click I Accept for the next step.



## 4. Be patient with the installation procedure.

5. Connect the Docking Station to a computer after the driver installation is completed. For connection details, refer to the chapter of Connection.
6. When the operating system detects the docking station, the reminder message will appear on the system tray.

## Verifying the installation

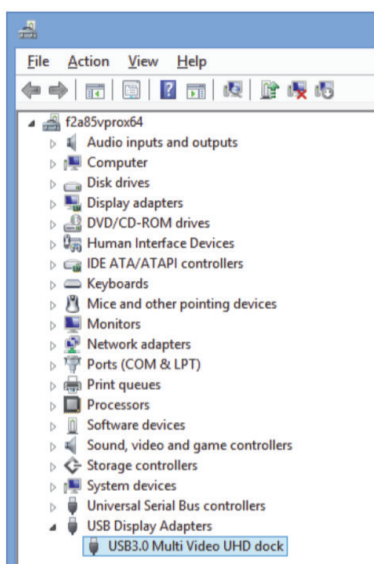
To verify the driver of the adapter, follow the step below. 1. Following the path to open the device manager. Windows® 7:

Control Panel\ System and Security\ Systems\  
Device manager

Windows® 8/ Windows® 8.1:

Settings\ Control Panel\ System and Security\ System\ Device manager

2. You will find Display Adapter device listed as below.



\*Actual strings depend on your operating system. The screen shots are from Windows® 8 and might vary slightly for each operating system.

NOTE:

If you cannot find the driver in the list, the driver may not be properly installed. Please delete the item, unplug the adapter and repeat the installation steps.

## Display configuration

NOTE: The following screenshots in this section are using Windows® 7 operating system. It may not match your operating system but the definitions of buttons, tabs and menus are the same.

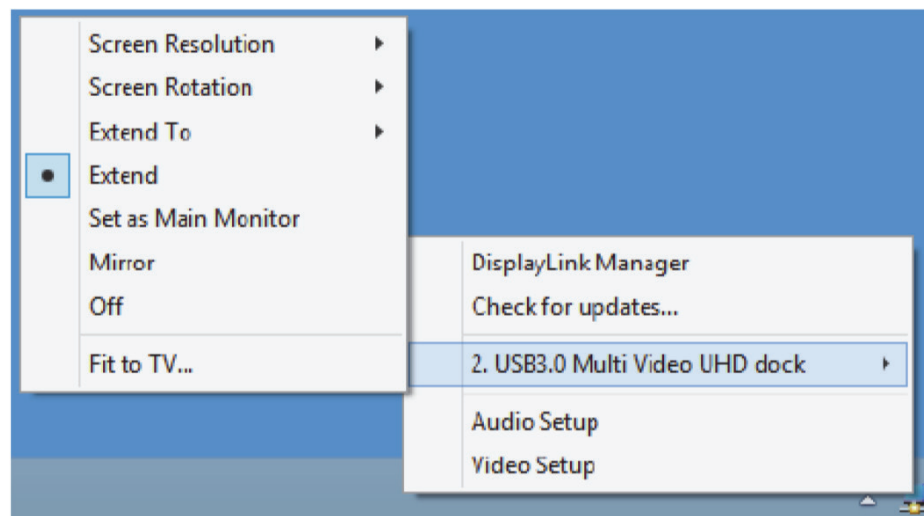
Utility settings

The supplied utility allows configuring the display mode, screen rotation, screen resolution, and physical arrangement of your monitors.

1. Click utility icon in Windows System Tray.

NOTE: If you cannot find the icon in Windows System Tray, click arrow icon to bring up icon list to find it.

2. Select a preferred option, and then click it using mouse.



Description of the settings

OPTIONS	DESCRIPTION
DISPLAYLINK MANAGER	ENABLE THE WINDOWS SCREEN RESOLUTION PAGE
CHECK FOR UPDATES	CHECK THE LATEST DRIVER AND DOWNLOAD IF AVAILABLE
SCREEN RESOLUTION	CLICK TO SELECT AN AVAILABLE RESOLUTION. NOTE THAT THIS FUNCTION IS INVALID IN MIRROR MODE, AS THE RESOLUTION IS DEFINED AS THE RESOLUTION OF THE PRIMARY MONITOR
SCREEN ROTATION	ROTATE THE SCREEN ACCORDING TO THE DESIRED ORIENTATION
EXTEND TO	THE CURSOR CAN EXTEND TO DESIRED SCREEN VIA LEFT/RIGHT/ABOVE/BELOW WAY MOVING
EXTEND	EXTEND THE SCREEN ACCORDING TO THE DESIRED ORIENTATION
SET AS MAIN MONITOR	SET THIS SCREEN TO THE MAIN SCREEN
NOTEBOOK MONITOR OFF	SWITCH THE ADD-ON MONITOR TO THE MAIN DISPLAY AND TURN OFF THE SCREEN OF THE LAPTOP. NOTE: THIS FUNCTION WORKS ONLY WHEN ONE ADD-ON MONITOR IS CONNECTED. THIS OPTION WILL ALSO ONLY APPEAR ON LAPTOP.

OPTIONS	DESCRIPTION
MIRROR	DUPLICATE THE PRIMARY MONITOR TO THE MONITOR WHICH CONNECTS WITH THE ADAPTER
OFF	TURN OFF THE MONITOR
FIT TO TV	ADJUST THE SIZE OF WINDOWS DESKTOP ON THE TV NOTE: THIS FUNCTION WORKS ONLY WHEN ONE ADD-ON MONITOR IS CONNECTED. BESIDES, THIS OPTION WILL ALSO ONLY WORK IN EXTENDED MODE. THE ADD-ON MONITOR WILL CHANGE TO THE EXTENDED MODE IF SELECTING THIS OPTION WHILE IN MIRROR MODE.
AUDIO SETUP	ENABLE THE WINDOWS AUDIO CONFIGURATION PAGE. THIS FUNCTION WORKS ONLY IN SPECIFIC MODELS.
VIDEO SETUP	ENABLE THE WINDOWS SCREEN RESOLUTION PAGE.



## Multi-monitor configuration

The DP, HDMI and DVI monitors can be connected through the Docking Station if monitors are already connected to the PC. Once extra monitors are connected, it can be configured to use either “mirror mode”, “extended mode” or be the primary display. NOTE: The DP and HDMI connectors can only be used one at a time. Slide the lid in front of the two connectors to uncover the connector you want to use and connect it to the monitor.

Windows® 7/ Windows® 8/ Windows® 8.1

Position the mouse anywhere on the Windows Desktop, Right-click and select Screen Resolution.

Alternatively, click the utility icon in the Windows System Tray, and then select DisplayLink Manager or Video Setup.

### Change the appearance of your displays



Display: 1. 2351

Resolution: 1920 x 1080 (Recommended)

Orientation: Landscape

Multiple displays: Extend desktop to this display

This is currently your main display. [Advanced settings](#)

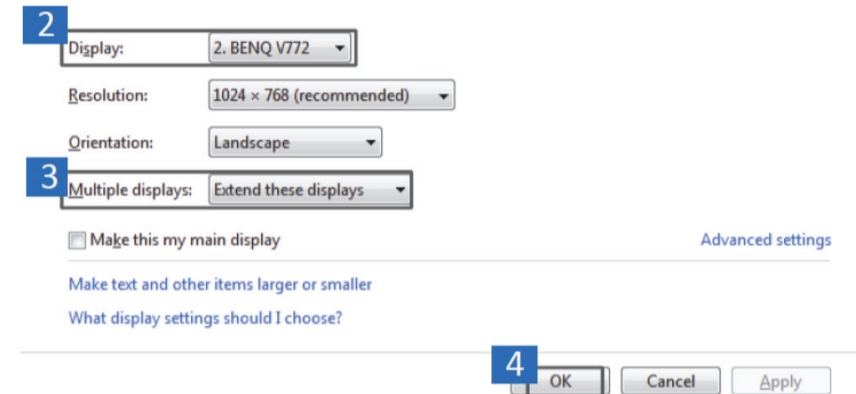
[Make text and other items larger or smaller](#)

[What display settings should I choose?](#)

OK Cancel Apply

### Extended mode

1. Refer to the Windows system configuration section to open the configuration page.
2. In the Display drop-down menu, select the preferred monitor.
3. Check the Multiple Displays > Extend these displays on Window® 7/ Window® 8/ Window® 8.1.
4. Click OK to confirm and close the settings screen.
5. Once the setting is completed, simply drag and drop the application icons or the opened windows to the add-on monitor. However, some applications may not support to display on the extended desktop.



### Cursor disappeared

If the status remains in the extended mode but the adapter is disconnected, the desktop will still be panned to the add-on monitor. The cursor may not be found on the primary monitor in such a case. If it happens, connect the add-on monitor through the adapter again or keep moving the mouse.

### Video playback in extended mode

If the video or DVD playback quality is poor or low performance in extended mode, please playback it on the primary monitor instead of the add-on monitor.

### Mirror mode

1. Refer to the Windows system configuration section to open the configuration page.
2. In the Display drop-down menu, select the preferred monitor.
3. Check the Multiple Displays > Duplicate these displays on Window® 7/ Window® 8/ Window® 8.1.
4. Click OK to confirm and close the settings screen.

**Switch the primary monitor**

1. Refer to the Windows system configuration section to open the configuration page.
2. In the Display drop-down menu, select the preferred monitor.
3. Check the box of Make this my main display on Window® 7, or Set as Main Monitor on Windows® 8/ Windows® 8.1.

**NOTE:** For some computers, you may need to disable the main display by unchecking the box of Extend the desktop onto this monitor or Extend my Windows desktop onto this monitor.

4. Click OK to confirm and close the settings screen. Windows shortcut  
Press Windows button + P to bring up the menu as below, and then select a desired option.  
This function is available for Windows® 7 / Windows® 8 / Windows® 8.1.



**Supported resolution**

Before adjusting the resolution, refer to the table below for the supported resolution.

\* Note that interlaced modes and reduced blanking modes are not supported.

		Refresh rate 16 bit	Refresh rate 32 bit
640x480	VGA	60 72 75 85	60 72 75 85
800x600	SVGA	56 60 72 75	56 60 72 75 85
1024x768	XGA	60 70 75 85	60 70 75 85
1280x720	720p	60	60
1280x768	WXGA+	60 70 75 85	60 70 75 85
1280x800	WXGA	60	60
1280x1024	SXGA	60 75 85	60 75
1366x768	WXGA+	60	60
1400x1050	SXGA+	60 75 85	60 75 85
1600x1200	UXGA	60	60
1680x1050	WSXGA+	60	60
1920x1080	1080p	60	60
1920x1200	WUXGA	60	60
2048x1152	QXGA	60	60
2560x1600	WQXGA	60	60

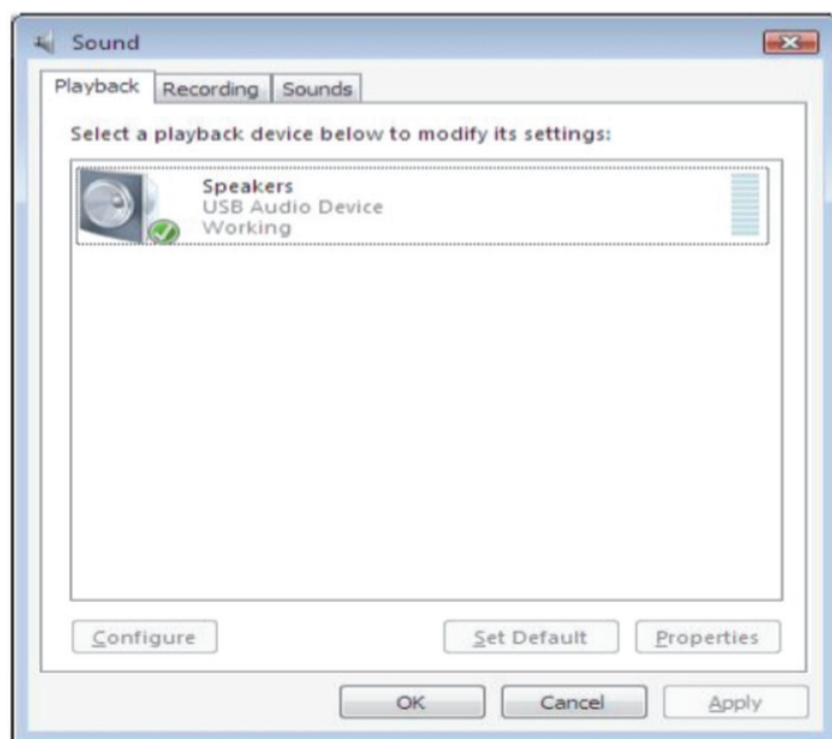


## Audio configuration

By default, when the docking station is connected to a computer, the audio configuration may be changed to USB (Multimedia) Audio Device automatically (this setting depends on models). If it does not work, follow the steps below to setup.

Windows® 7/ Windows® 8/ Windows® 8.1

1. Open Control Panel and then select the hardware and sound icon.
2. Click Sound > Manage audio devices and then select USB Audio Device or Displaylink Audio.



## Uninstall the driver

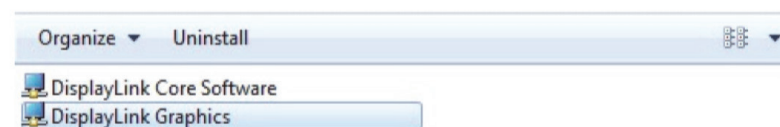
1. Follow the instructions to find the driver path, and then right-click on DisplayLink Graphics to uninstall the driver.

Windows® 7

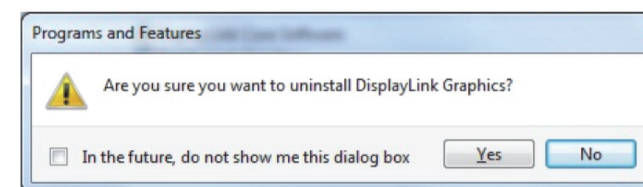
Control Panel > Programs > Programs and Features > Uninstall or change the program

Windows® 8/ Windows® 8.1

Settings > Control Panel > Programs > Uninstall a program



2. Click Yes to confirm the uninstallation.



3. Click Yes to restart your computer. You can also disconnect the video connection now.

