

# HQView-300 Series Operating Instructions



***This manual explains how to operate your HQView-300 Series (HQView-3xx) image scaler. The HQView-300 Series comes in three versions HQView-300S, HQView-310 and HQView-320. HQView-3xx is designed to provide users with a powerful and flexible method of driving large display devices, and multiple screen applications including flexible geometry correction functions.***

***If you have any queries relating to this or any other product supplied by Calibre please visit our web site [www.calibreuk.com](http://www.calibreuk.com).***

***For technical support please e-mail [techsupport@calibreuk.com](mailto:techsupport@calibreuk.com) or send your queries by fax to (44) 1274 730960, for the attention of our Technical Support Department.***

## **COPYRIGHT**

This document and the software described within it are copyrighted with all rights reserved. Under copyright laws, neither the documentation nor the software may be copied, photocopied, reproduced, translated, or reduced to electronic medium or machine readable form, in whole or in part, without prior written consent of Calibre UK Ltd ("Calibre"). Failure to comply with this condition may result in prosecution.

Calibre does not warrant that this product package will function properly in every hardware/software environment.

Although Calibre has tested the hardware, firmware, software and reviewed the documentation, CALIBRE MAKES NO WARRANTY OR REPRESENTATION, EITHER EXPRESS OR IMPLIED, WITH RESPECT TO THIS HARDWARE, FIRMWARE, SOFTWARE OR DOCUMENTATION, THEIR QUALITY, PERFORMANCE, MERCHANTABILITY, OR FITNESS FOR A PARTICULAR PURPOSE. THIS SOFTWARE AND DOCUMENTATION ARE LICENSED 'AS IS', AND YOU, THE LICENSEE, BY MAKING USE THEREOF, ARE ASSUMING THE ENTIRE RISK AS TO THEIR QUALITY AND PERFORMANCE.

IN NO EVENT WILL CALIBRE BE LIABLE FOR DIRECT, INDIRECT, SPECIAL, INCIDENTAL, OR CONSEQUENTIAL DAMAGES ARISING OUT OF THE USE OR INABILITY TO USE THE SOFTWARE OR DOCUMENTATION, even if advised of the possibility of such damages. In particular, and without prejudice to the generality of the foregoing, Calibre has no liability for any programs or data stored or used with Calibre software, including costs of recovering such programs or data.

***Calibre UK Ltd  
Cornwall House, Cornwall Terrace  
Bradford, West Yorkshire  
BD8 7JS, England***

***Telephone       +44 (0)1274 394125  
Fax               + 44 (0)1274 730960  
Email            [techsupport@calibreuk.com](mailto:techsupport@calibreuk.com)  
Web-site        [www.calibreuk.com](http://www.calibreuk.com)***

Copyright       (c) 2011       All World-wide Rights Reserved

All trade marks acknowledged

Calibre operates a policy of continued product improvement, therefore specifications are subject to change without notice as products are updated or revised.

E&OE.

## Contents

SAFETY WARNING:	1
INTRODUCTION	2
1.1. General Introduction	2
1.2. Packing List	3
HQVIEW-3XX SYSTEM DESCRIPTION	4
2.1. Product Overview	4
2.2. Product Specification	4
2.2.1. Power Supply Requirement	4
2.2.2. Component Video Inputs	4
2.2.3. Computer (SVGA) Inputs VESA formats	4
2.2.4. HDMI & DVI Inputs	4
2.2.5. Display Output	5
HQVIEW-3XX CONTROL	6
3.1. Menu Tree	6
3.2. Introduction	9
3.3. Main Menu	11
3.4. Input	11
3.5. Output	12
3.5.1. Output Mode	12
3.5.2. Location	12
3.5.3. Optimize for Display	12
3.5.4. Frame Rate	12
3.5.5. I/O Lock	12
3.5.6. Native Color Temp	13
3.5.7. Output Gamma	13
3.6. Color	13
3.6.1. Black-Level Offset	13
3.6.2. Black-Level	13
3.6.3. Contrast	13
3.6.4. Saturation	13
3.6.5. Hue	13
3.6.6. RGB values	14
3.6.7. Color Temp	14
3.6.8. RGB values	14
3.6.9. Input Gamma	14
3.7. Geometry	15
3.7.1. Horizontal/Vertical Position	15
3.7.2. Edge Control	15
3.7.3. Warp	15
3.7.4. Picture Format	15
3.7.5. Aspect Ratio	16
3.7.6. Overscan	16
3.7.7. Pan Tilt Zoom	16
3.8. Enhancement	17
3.8.1. Sharpness	17
3.8.2. Detail	17
3.8.3. Video Filters	17
3.9. System	18
3.9.1. User	18
3.9.2. Names/Profiles	18
3.9.3. Input Config	18
3.9.4. Display Mode	18
3.9.5. Menu Settings	19
3.9.6. Network Settings	19
3.9.7. Factory Defaults	19
3.10. Multiple Unit	20
3.10.1. Auto Zoom	20
3.10.2. Units Wide/Units High	20

3.10.3. Horizontal Pos/Vertical Pos	20
3.10.4. Blend Width	20
3.10.5. Blend Curve Type	21
REMOTE CONTROL WEB SERVER	22
4.1. Introduction	22
4.2. Installing the Software	22
4.3. Discovery Tool	22
4.4. Software Operation	23
FIRMWARE UPDATE	24
5.1. Introduction	24
5.2. Updating Firmware	24
ENVIRONMENTAL AND EMC	25
6.1. Recommended Operating Conditions	25
6.2. Storage	25
6.3. CE and FCC Compliance	25

**SAFETY WARNING:**

1. THERE ARE NO USER SERVICEABLE PARTS WITHIN THE UNIT. REMOVAL OF THE TOP COVER WILL EXPOSE DANGEROUS VOLTAGES. DO NOT OPERATE THE UNIT WITHOUT THE TOP COVER INSTALLED.
2. ENSURE THAT ALL ELECTRICAL CONNECTIONS (INCLUDING THE MAINS PLUG AND ANY EXTENSION LEADS) ARE PROPERLY MADE AND COMPLY WITH ELECTRICAL SAFETY REGULATIONS.
3. ENSURE THAT THE INTEGRITY OF THE EQUIPMENT ISOLATION BARRIER IS MAINTAINED WHEN CONNECTING TO OTHER EQUIPMENT. THIS MEANS THAT ONLY LOW VOLTAGE ISOLATED CIRCUITS MAY BE CONNECTED TO THE SIGNAL INPUTS AND OUTPUTS. IF ANY DOUBT EXISTS CONSULT QUALIFIED SERVICE PERSONNEL.
4. TO PREVENT SHOCK OR FIRE HAZARD DO NOT EXPOSE THIS EQUIPMENT TO RAIN OR MOISTURE. IF SUCH EXPOSURE OCCURS, REMOVE THE PLUG FROM THE MAINS OUTLET AND HAVE THE EXPOSED UNIT CHECKED BY QUALIFIED SERVICE PERSONNEL.
5. DO NOT CONTINUE TO OPERATE THE EQUIPMENT IF YOU HAVE ANY DOUBT ABOUT IT WORKING NORMALLY, OR IF IT IS DAMAGED IN ANY WAY. WITHDRAW THE MAINS PLUG FROM THE MAINS OUTLET AND CONSULT QUALIFIED SERVICE PERSONNEL.
6. DO NOT REMOVE ANY FIXED COVERS UNLESS YOU ARE QUALIFIED TO DO SO AND EVEN THEN WITHDRAW THE MAINS PLUG FROM THE MAINS OUTLET BEFORE YOU START.
7. THIS EQUIPMENT CONTAINS NO USER SERVICEABLE PARTS. REFER ALL SERVICING AND MAINTENANCE TO QUALIFIED SERVICE PERSONNEL.
8. TO AVOID EXPLOSION, DO NOT OPERATE THIS EQUIPMENT IN AN EXPLOSIVE ATMOSPHERE

## INTRODUCTION

### **1.1. General Introduction**

HQView-3xx is a very flexible image scaler developed specifically for driving large screen displays and multiple screen applications from video or graphics sources.

HQView-3xx features state of the art digital image processor which provides market leading HD& SD per-pixel multiple low-angle motion-adaptive de-interlacing and automatic film pull-down correction for 3:2 and 2:2, significantly outperforming the capabilities of benchmark competitor products.

HQView-3xx features excellent image processing algorithms for the very best scaling, film and video noise reduction and MPEG artefact reduction.

HQView-3xx uses a very flexible high performance video input front end including true component video support in analog YPbPr and RGBS formats. HDMI and DVI video with HDCP encryption is also supported, as are computer graphics inputs in SVGA analogue and HDMI/DVI digital formats.

The output format can be set to I/O Lock mode where it locks the output frame rate to the input frame rate dynamically without frame rate conversion so as to reduce system latency, or it can be set to a fixed output frame rate for driving basic screens which are not 50Hz-compatible. Furthermore, the HQView-3xx can be set to have the output resolution match the input resolution to preserve aspect ratio. A Low latency mode with non-motion adaptive reduced processing is available to further reduce latency.

Outputs are available in DVI digital formats. Note that if an HDCP encrypted signal is connected to the HDMI or DVI input, the DVI output signal will be similarly HDCP encrypted.

HQView-3xxV2 supports Pan, Zoom and Tilt to select a part of the input image, fill the screen and pan within it.

System control is via an OSD controlled by keys on the front panel or through an intuitive 'Windows' application connected via a normal RS232 serial port or via TCP/IP (ethernet).

HQView-3xx can be operated with different firmware. At time of issuing this document three firmware options are available. Each firmware provides different feature sets controlled through the OSD. Thus, the OSD menu systems of the firmware options may deviate from each other. Special emphasize is given in the discussion of the OSD menu system in the corresponding chapters.

In the basic configuration HQView-300S is used for single display installations without a need for geometry correction.

The next stage is the HQView-310 for multi screen or multi projector installations featuring Auto Zoom and Edge Blend, as well as embedded warp functions for geometry correction.

Edge Blend allows to electronically reduce the brightness level of certain image regions to match the brightness of overlapping areas. Auto Zoom automatically crops and zooms the input video image to display the section of the total image on the corresponding projector or screen.

Embedded warp functions allows adjustment of the image in a projection scenario to match a rotated, tilted or curved screen. For 9:16 portrait mode signage special predefined warp maps are available to rotate and stretch a video image to fill a +/-90° rotated display panel.

HQView-320 adds free form warp capability for certain non-flat screens in a multi projector installation. Warp maps created with the PC tool "Warp Generator" can be uploaded into HQView-320 and processed accordingly.

## **1.2. Packing List**

HQView-3xx is supplied with the following:

- 1) This manual
- 2) 3 pin plug IEC mains cable
- 3) DVI-D output cable
- 4) CD

## HQVIEW-3XX SYSTEM DESCRIPTION

### **2.1. Product Overview**

HQView-3xx is designed to accept the following input signals:

- YPbPr or RGBS SD/ED/HD component video via 3/4xBNC
- VGA analog (computer interface) via 15HDD
- DVI (Digital Visual Interface) via DVI-I (only the digital part is implemented on this connector), HDMI is supported via a HDMI/DVI adapter.

### **2.2. Product Specification**

This section provides technical details for all possible inputs.

#### **2.2.1. Power Supply Requirement**

12V DC table top power supply requiring a 100V-264VAC 50/60Hz mains connection.

#### **2.2.2. Component Video Inputs**

Via 3 or 4 BNC connectors

YPbPr, YPbPrS, RGB and RGBS component video, menu selectable.

Signal formats 484i (480i) and 576i (SD), 480p, 576p (ED), 720p, 1080i at 50, 59.94 and 60Hz and 1080p at 24, 25, 29.97 and 30Hz.

Please note this input does not support Computer SVGA signals which should be connected via the Computer SVGA input.

#### **2.2.3. Computer (SVGA) Inputs VESA formats**

Signal formats:	DOS, VGA – WUXGA up to 165MHz pixel clock
RGB video level	0.7V - 1.0V
RGB input impedance	75 Ohms
Sync format	Separate H & V sync at TTL/5V levels.

#### **2.2.4. HDMI & DVI Inputs**

DVI-D input with or without HDCP

HDMI 1.3 with or without HDCP through a DVI/HDMI adapter, 36-bit video compatible.

Signal formats -video

484i and 576i (SD) in double-rate formats (1440 pixels per line), 480p, 576p (ED), 720p, 1080i at 50, 59.94 & 60Hz, 1080p at 24, 25, 30, 50, 59.94 & 60Hz.

Signal formats – computer

DOS, VGA – WUXGA up to 165MHz pixel clock



### 2.2.5. Display Output

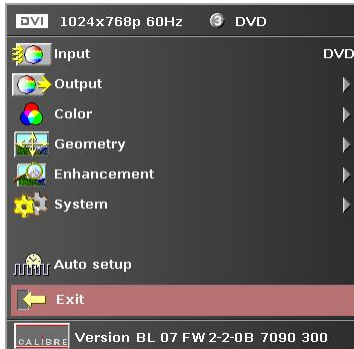
A DVI-D output connector is provided. When the input signal has HDCP encryption, the DVI-D output connector will carry a similarly HDCP encrypted signal. The DVI-D connector will support HDMI 1.3 with 36-bit video when connected to a suitable HDMI 1.3 receiver. ***When an HDCP encrypted signal is input, but the display device does not support HDCP, the output image will turn black and a message indicating HDCP Signal will come up to indicate this.***

## HQVIEW-3XX CONTROL

### 3.1. Menu Tree

#### HQView-300S Menu Tree

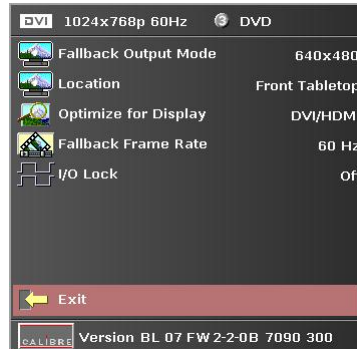
#### 1<sup>st</sup> Level



#### 2<sup>nd</sup> Level



#### 3<sup>rd</sup> Level



#### 4<sup>th</sup> Level

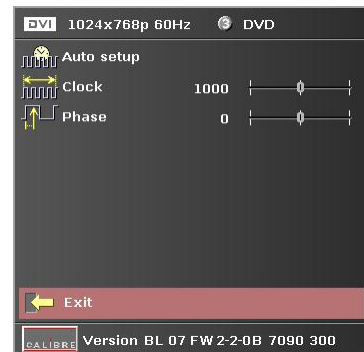
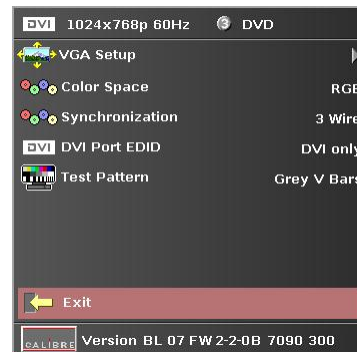
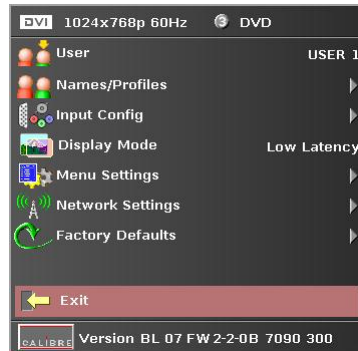


**1<sup>st</sup> Level**

**2<sup>nd</sup> Level**

**3<sup>rd</sup> Level**

**4<sup>th</sup> Level**

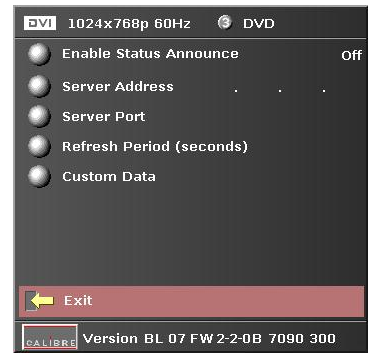
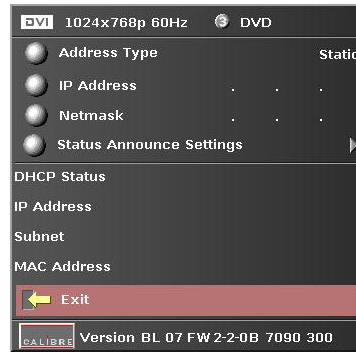


**1<sup>st</sup> Level**

**2<sup>nd</sup> Level**

**3<sup>rd</sup> Level**

**4<sup>th</sup> Level**



HQView-310 as well as HQView-320 have an additional Warp and Multiple Unit Menu.

<b>1<sup>st</sup> Level</b>	<b>2<sup>nd</sup> Level</b>	<b>3<sup>rd</sup> Level</b>	<b>4<sup>th</sup> Level</b>
-----------------------------	-----------------------------	-----------------------------	-----------------------------

HQView-320 has an additional Discrete Warp Map Item.

<b>1<sup>st</sup> Level</b>	<b>2<sup>nd</sup> Level</b>	<b>3<sup>rd</sup> Level</b>	<b>4<sup>th</sup> Level</b>
-----------------------------	-----------------------------	-----------------------------	-----------------------------

### 3.2. Introduction

The HQView-3xx units have the input connectors on one side of the housing and the output connector as well as the communication ports on the opposite side. The keypad for controlling HQView-3xx is located on the input connectors side. The active input is indicated by their corresponding triangles lit green.



1 – Keypad with three keys for OSD menu navigation (Menu, Down and Up) and a key for input channel selection (Input).

With the Menu key the OSD menu is activated. The up/down keys are used for OSD menu navigation. To exit the OSD menu or any submenu navigate go to the Exit item and press the menu key. To access a submenu navigate to it and press the menu key. To apply a change go to the menu item, press the menu key and make a parameter change with the up/down key. Confirm the change by pressing the Menu key. This will also bring you back to the submenu.

By pressing the Input button multiple times the available input channels are toggled through. The active channel is indicated by the associated green lit triangle(s).

With the following multiple key presses further functions can be applied:

**Keypad unlock:** Up/Down

**Set output and fallback output mode to VGA:** Menu/Up

**Mode reset:** Menu/Down

**Factory reset:** Menu/Up/Down

A factory reset can also be applied when pressing the factory reset key combination at power up. The keys have to be kept pressed for about 10 seconds until the RGB(S) input LEDs stop flashing. If the keys are released during that 10 seconds period the system will get into Updater mode (see chapter 5) since the Menu key is part of this key combination.

2 – YPbPr / RGB(S) video input

3 – DVI-I connector featuring a DVI-D input and a VGA input

4 – DVI-I output connector (only the digital DVI-D is supported, HDMI 1.3 receivers can be connected with a DVI/HDMI adapter cable)

5 – TCP/IP port

6 – USB port

7 – RS232 port

8 – Power supply connector

### **3.3. Main Menu**

The main menu lists the input channel select item, 6 sub menus, and a menu item for automatic setup of VGA modes. The 6 sub menus are Output, Color, Geometry, Enhancement, System and Multiple Unit (only HQView-310 and HQView-320).

On each menu page an Exit menu item is available to leave the menu or submenu. Some adjustments are not applicable to all signal types or operating modes, in which case those non-applicable functions will be ghosted and are not accessible via the menus.

All menus have a top status line and a bottom line indicating the firmware revision number. In the status line the currently selected input channel is indicated and the detected mode is identified. The firmware revision number displays the revision number of the bootloader behind BL, the revision number of the firmware behind FW and whether it is a 300S, 310, 320 type HQView unit.

To set up your HQView-3xx it is recommended that you follow this procedure:

Choose the correct output mode and parameters to suit your screen or projector.

Select the correct input signal.

Set the input levels and features appropriately to optimize the appearance of your image.

Set any other parameters to suit your application.

Note: All Input parameters are specific to your chosen input channel and input signal type, they are not global to the unit. All Output parameters are global

### **3.4. Input**

The list of available inputs can be scrolled through using the Up and Down keys. The new input is not selected until the Menu key is pressed.

The list of inputs are: Component, VGA, DVI and Test Pattern.

Test patterns can be generated by HQView-3xx without needing an input connected. When Test Pattern is selected as the input, the required test pattern can be chosen with the menu navigation up/down keys when the OSD menu is off.



### **3.5. Output**

This menu contains adjustments associated with setting up outputs from the unit. Most items are collected in the Display Type submenu. Use the up and down keys to scroll to the required item and press the Menu key.

#### **3.5.1. Output Mode**

Settings: 640x480, 800x600, 1024x768, 1280x768, 1280x800, 1280x1024, 1360x768, 1366x768, 1400x1050, 1440x900, 1600x1200, 1680x1050, 1920x1200, 720p (1280x720), 1080p (1920x1080), 480p (720x480), 576p (720x576)

Set up the desired output resolution with output mode. The output mode setting should match the native resolution of the imaging device to avoid double scaling.

#### **3.5.2. Location**

Settings: Front Tabletop, Front Ceiling, Rear Tabletop, Rear Ceiling

The image can be flipped to accommodate different projection scenarios as well as screens mounted upside down.

#### **3.5.3. Optimize for Display**

Settings: DVI forced, Optimized, DVI/HDMI

Internally, the display interface processes data at a full ten bits per colour. The colour depth on the DVI-D output is determined by the supported standard of the attached monitor or device when set to DVI/HDMI. For DVI 1.0 and HDMI 1.1/1.2 devices it is 24 bit, for HDMI 1.3 compliant devices it is up to 36 bit.

DVI forced will output with 24 bit colour depth irrespective of the supported standard of the attached monitor.

When the Optimized setting is enabled the output resolution is automatically set to the native screen resolution of the attached display if the Aspect Ratio menu item was chosen to Scale or when no input is detected. The colour depth is determined in the same way as when set to DVI/HDMI.

#### **3.5.4. Frame Rate**

Settings: 50Hz, 60Hz, Auto

In auto mode the output frame rate follows the input frame rate, i.e. when a 50Hz/60Hz video signal is detected, the output is repeated at 50Hz/60Hz. When the input video signal has other than 50Hz or 60Hz (with margin) refresh rate, the output is set to 60Hz. Resolution and actual frame rate is shown in the status lines of the OSD window under Output Format.

#### **3.5.5. I/O Lock**

Settings: On, Off

If I/O Lock is switched off the output is run with a fixed refresh rate determined by the frame rate setting, which deviates from the input refresh rate, even if both are nominally at the same rate. This causes occasional frame dropping or repeat. If I/O Lock is on the output refresh rate is following the input refresh rate. This is achieved by modulating the output clock and works if input and output refresh rate are nominally at the same rate, e.g. when frame rate is set to 60Hz and the video input is also 60Hz. If e.g. the video input rate is 50 Hz and the Frame rate is set to 60Hz, the output is in free run mode. The status line of the OSD window under Sync Mode indicates if the output signal is locked to the input signal (I/O Locked) or in free run mode (Free Run) .



### **3.5.6. Native Color Temp**

Settings: 5500, 6500, 7500, 9300, 10000

Native Color Temp allows the user to select from pre-configured color temperatures to match the display. If both Native Color Temp set here in the Output menu and Color Temp set in the Color menu are set to the same value, no conversion is performed.

### **3.5.7. Output Gamma**

Settings: 1.0 to 3.0 in steps of 0.1

Output gamma allows to re-gamma video signals with pre-configured gamma values to match the display. Input gamma and output gamma both default to 2.2. If they are both set to the same value, there is no effect on the image.

Note: If e.g. an adjustment to reduce the level of red in the image is required, select a higher number for the (input) Color Temp in the Color menu, or a lower number for the Native Color Temp in the Output menu.

## **3.6. Color**

This menu contains adjustments associated with setting up inputs to the unit. Use the Up and Down keys to scroll to the required item and press the Menu key.

### **3.6.1. Black-Level Offset**

Settings: 0 IRE, 7.5 IRE

Used to select 7.5 IRE black level set-up adjustment. Should always be set to 7.5 IRE for HDMI video inputs and should usually be off for analog video inputs.

### **3.6.2. Black-Level**

Settings: -50 to 50 in steps of 1

Black level controls the offset applied to the video signal.

### **3.6.3. Contrast**

Settings: -50 to 50 in steps of 1

Contrast controls the gain applied to the video signal.

### **3.6.4. Saturation**

Settings: -50 to 50 in steps of 1

Control of video saturation, applies to all video inputs but not computer input signals or formats.

### **3.6.5. Hue**

Settings: -50 to 50 in steps of 1

Control of video hue, applies to all video inputs but not computer input signals or formats.

### **3.6.6. RGB values**

This is a user-defined color temperature setting whereby individual R,G,B gain and offset (bias) can be set so as to accurately calibrate a particular input to the display device.

### **3.6.7. Color Temp**

Settings: 5500, 6500, 7500, 9300

Color Temp allows the user to select from pre-configured color temperatures to match the color temperature of the incoming signal. If both Color Temp set here in the Color menu and Native Color Temp set in the Output menu are set to the same value, no conversion is performed.

### **3.6.8. RGB values**

This is a user-defined color temperature setting whereby individual R,G,B gain and offset (bias) can be set so as to accurately calibrate a particular input to the display device.

### **3.6.9. Input Gamma**

Settings: Gamma 1.0, Gamma 1.5, Gamma 2.2, Gamma 2.8

Set this value to match the native gamma of the input signal. Input gamma and output gamma both default to 2.2. If they are both set to the same value, there is no effect on the image.

### **3.7. Geometry**

This menu contains adjustments associated with setting up position, aspect ratio and scale of the input signal. Scale can be as simple as an overscan up to arbitrarily warping the image.

#### **3.7.1. Horizontal/Vertical Position**

Settings: in steps of 1 pixel/line

Change the positional values to match the display borders.

#### **3.7.2. Edge Control**

Submenu for changing the position of the image edges, effectively scaling the image in horizontal and vertical direction. HQView-310 and 320 have some limitations compared to HQView-300 regarding value range, due to the use of the warp engine for scaling and auto zoom.

#### **3.7.3. Warp**

Note: Warp functionality is only available on HQView-210.

Submenu for warping the image and defining projection condition. The projection condition can be Front Tabletop, Front Ceiling, Rear Tabletop or Rear Ceiling. The corresponding image flip is applied on top of the following warp applications. The warp applications are Keystone, 4-Corner, Rotation, and PC (only HQView-320). Under the Keystone application the image can be adjusted to match a horizontally and vertically tilted screen. Also, Pin/Barrel distortion of the lens or screen can be adjusted simultaneously. Under the 4-Corner application all corners can be moved and the image is calculated to fit into the given trapezoid. The Rotation application let you rotate the image from -180 to 180 degree (one full circle). At the same time Pin/Barrel distortion of the lens or screen can be adjusted again. With PC application activated the HQView-320 communicates with the PC tool Warp Generator. Warp Generator allows you to define an arbitrary screen in live operation by projecting a grid on the surface and move the grid points to get a rectangular output. This grid information can then be downloaded in one of eight slots used for real-time processing of image data which make the image appear rectangular on a curved screen.

For convenience all settings can be reset with one button provided in the submenus.

#### **3.7.4. Picture Format**

Settings: Standard, Full Screen, Crop, Anamorphic

Picture Format allows a user to select the displayed aspect ratio where the signal input is at variance with the display panel's natural aspect ratio. Note that some aspect ratios may not be applicable to all signal types, in which case selecting a non-applicable aspect ratio conversion will have no effect on the displayed image. E.g. when a 16:9 image is displayed on a 16:9 panel all settings give an identical full screen image.

Standard preserves the aspect ratio of the incoming image and scales the image to fit into the size of the panel. Dependant on the aspect ratio of the panel the image is either bordered by the right/left side or bottom/top of the panel. Non-used areas of the panel are displayed black (letterboxed). Full Screen scales the image to the size of the panel without preservation of the aspect ratio. Crop preserves the aspect ratio and scales the image to fit the screen. Dependant on the aspect ratio of the panel either the top/bottom or right/left areas of the image are cropped. Anamorphic scales the input image such that it is displayed with a 16:9 aspect ratio when displayed on the screen. The image is further scaled to fit into the size of the panel. Dependant on the aspect ratio of the panel the image is then either bordered by the right/left side or bottom/top of the panel. Non-used areas of the panel are displayed black (letterboxed).

### 3.7.5. Aspect Ratio

Settings: Scale, Preserve

The system can be set to scale the input image to a fixed output resolution or, with the setting preserve, to choose an output resolution matching the input resolution. If no matching output resolution is available or no input is detected, the pre-defined output resolution is used though.

### 3.7.6. Overscan

Settings: 0 to 10 in steps of 1

Overscan is used to slightly zoom into the image. Thus, the border area of an image is no longer displayed on the screen. This cuts off unwanted features at the top or bottom from e.g. video images.

### 3.7.7. Pan Tilt Zoom

This menu provided settings to zoom and shrink the image, as well as panning within the image.

Pan Tilt Zoom (PTZ) can be switched on or off. When switching on the latency of the system is increased by one frame. Thus, there is a difference of a PTZ setting off or on with no zoom. PTZ settings can be saved per mode or globally, i.e. the same PTZ settings are applied when switching input channels or changing the input mode.

The Zoom slider allows to zoom into the image or shrink it. When Aspect Lock is set to On the separate slider for zooming vertically is greyed out and the horizontal zoom or shrink factor is used as vertical factor as well. The aspect ratio is preserved. When Aspect Lock is Off horizontal and vertical scaling factors can be chosen separately.

With the Pan and Tilt sliders panning within the image in horizontal and vertical direction is possible. Off raster panning is allowed, i.e., the image can be shifted outside the active area of the display.

For convenience the PTZ settings can be reset with one button.

### **3.8. Enhancement**

The enhancement menu provide image enhancement functions. Note that the enhancement settings apply to video input signals only, not computer graphics signals.

#### **3.8.1. Sharpness**

Settings: -50 to 50 in steps of 1

Control of the sharpening enhancement filters' levels. These are peaking filters to improve high-frequency response. Note that setting this control too high on a signal which already has good high frequency response will cause ringing or ghosting.

#### **3.8.2. Detail**

Settings: 0, 1, 2, 3

This filter provides powerful 2D image enhancement which can be used to greatly improve detail definition and clarity without causing image ringing or ghosting. It improves both horizontal and vertical detail. Correct setting of the detail enhance filter can make SD signals look virtually indistinguishable from true HD. At setting 0 the filter is switched off, with setting 3 providing the highest effect.

#### **3.8.3. Video Filters**

The video filters menu provides LTI/CTI filters and TRNR/MNR noise reduction filters.

The LTI filter enhances the sharpness of the luminance component. The CTI filter enhances the color sharpness of the chrominance signal by increasing the steepness of color edges.

TRNR (Temporal Recursive Noise Reduction) and MNR (Mosquito Noise Reduction) are available for SD input signals only. These filters reduce spatial and temporal noise as well as block artifacts.

### **3.9. System**

This selection contains functions which are more applicable to system operation than to picture adjustment.

#### **3.9.1. User**

Settings: USER 1, 2, 3, 4

A predefined setting stored under a user name can be selected. Several settings of the HQView-3xx can be stored under a user name. Thus, different users can store their preferred HQView-3xx settings and recall these profiles by picking up their user name from this menu.

Note: Using the Web interface, (any number of) settings can also be stored/restored to/from a PC disc drive. This feature is only available on V2 hardware.

#### **3.9.2. Names/Profiles**

The Names/Profiles menu provides input masks to rename the generic input channels and user names. User names and input channel names can be changed to any word with a maximum of 12 alpha numeric characters with a value range of 0-9, A-Z and blank.

The Names/Profiles menu allows the user to store profiles under a certain user name. It also allows to copy user profiles by loading a profile stored under one user name and save it under another user name. Reset Profile allows to restore default HQView-3xx settings for the currently selected user.

#### **3.9.3. Input Config**

This menu provides items to configure the VGA, Component and DVI interface. It also allows to choose a default test pattern.

The VGA submenu is for adjusting analogue computer video. A button for automatic setup of frequency and phase of the sampling clock is provided. This automatic adjustment is strongly recommended. Frequency (Clock) and phase can also be altered manually.

The HQView-3xx Component input is configured through the menu item Color Space to cope with either RGB or YPbPr color space. The sync signal can be stripped from the Green or Y channel with the setting 3 Wire or from the separate sync line with the setting 4 Wire. The Auto setting will automatically detect a sync signal and set-up the HQView-3xx accordingly. This is set under the menu item Synchronisation.

The DVI port EDID can be set to DVI only and HDMI. It defaults to DVI only, since some sources are confused by the additional CEA blocks present in a HDMI port EDID.

When the OSD menu is off the test pattern can be toggled through by pressing the up and down keys of the keypad. For unit control through a web browser or to set up a certain default test pattern a list box to choose the pattern from is provided.

#### **3.9.4. Display Mode**

The "Display Mode" can be set to either Low Latency or Best Picture. In Best Picture optimum image processing is applied, whereas in Low Latency mode the lowest latency is achieved. The flicker of interlaced video is not suppressed totally for the latter setting. Thus it has the disadvantage of conventional CRT TVs, but also their advantage of almost no delay in response, which is important for applications such as gaming, simulation or imaging in medical treatment.

### **3.9.5. Menu Settings**

This menu provides items to change the menu position and menu display time, i.e. the time after which the OSD is switched off again with no user interaction. OSD Messages can be activated and deactivated.

The menu language can be altered and the keypad can be locked. To unlock the keypad a combination of keys has to be pressed at the same time. The locking of the keyboard is accompanied by the message: Keypad is locked. Press Up/Down to unlock. When successfully unlocking the keypad the message shows up: Keypad unlocked.

### **3.9.6. Network Settings**

The Network Settings menu allows to configure the HQView-3xx TCP/IP address for communication with e.g the warp generator PC tool. Under Address Type a static or DHCP leased address can be chosen. The static address and Netmask need to be entered manually.

The Network Settings menu has a section with information on the DHCP Status and IP address assigned to the board, as well as the fixed MAC Address programmed into the HQView-3xx. The DHCP status is Off when static assignment is used or it displays an address when DHCP has leased an address accordingly or it is None assigned if the lease was not successful.

Note: When changing from DHCP to Static mode or vice versa it is strongly recommended that HQView-3xx is powered down after such a change, then powered back up, so that it is properly recognised by other devices on the network.

In the Network Settings menu is a submenu Status Announce Setting. This feature is activated when Enable Status Announce is switched on. HQView-3xx will then send messages out continuously through RS232 and TCP/IP to signal system condition. Server address and port of the PC where to send the message need to be entered. The Refresh Rate determines the rate at which the HQView-3xx status condition and the message entered under Custom Data being sent out.

### **3.9.7. Factory Defaults**

This button let you restore all settings to the default values of the HQView-3xx, thus, provide a means to get back to a known (good) system state. A requestor will come up and ask to confirm prior to actual restore.

### **3.10. Multiple Unit**

The HQView-310 and HQView-320 have a Multiple Unit menu to set up each unit for use in a multi screen application.

Multiple screens are stitched together to provide a bigger display with higher resolution than a single display. Each display is driven by a separate HQView unit. Each HQView unit gets the same graphics or video input signal through a distribution amplifier. The HQView unit cuts out and resizes the image to display the part of the image assigned to the corresponding screen. In a multi projection display the individual projections typically are chosen to overlap to give seamless transitions. Overlapping regions are illuminated by multiple projectors and are brighter than non-overlapping regions. For a uniform brightness over the total display the brightness in the overlapping regions has to be reduced electronically.

Important: When using multiple HQView units to drive one single large screen, it is essential that all HQView units are I/O locked, otherwise motion tear will be observed at the boundaries of the image processed by each HQView unit. It is also essential that all HQView units are setup for the same processing latency (either all units are in Best Picture mode or all units are in Low Latency mode).

#### **3.10.1. Auto Zoom**

Settings: On, Off

Switches on the auto zoom resizing the video image to display the assigned part of the total image.

AutoZoom is switched off automatically when the on-screen menu is activated and that menu cannot be properly displayed. The menu is scaled to a certain extent by the warp engine and may exceed the size of the screen. Also, only the active video area can be used for the on-screen menu. This would crop the menu and make it impossible to navigate. A message will indicate such situations. After having done the change AutoZoom can be reactivated.

#### **3.10.2. Units Wide/Units High**

Settings: 1, 2, 3, 4/ 1, 2, 3, 4

Provides the HQView unit information of the multi screen installation. The number of horizontally and vertically installed screens or projectors is entered.

#### **3.10.3. Horizontal Pos/Vertical Pos**

Settings: 0 to (Units Wide – 1) in steps of 1/ 0 to (Units High – 1) in steps of 1

Provides the HQView unit information which window of the total image it is assigned to and has to process (cut out and resize).

#### **3.10.4. Blend Width**

The blend width menu provides sliders to set up the overlap region for left, right, top and bottom blend region. The overlap is set up in output pixels with a range of up to a quarter of the output resolution. For a configuration with two projectors in horizontal direction the overlap can be higher to allow 16:9 images to fit on two combined projectors with an aspect ratio of 4:3 or 5:4.

An offset for the blend region can be set-up as well. The region between the edge and the start of the blend area is black. The total pixels of blend area and offset region is limited by the same amount of pixels as for an offset of zero.

Note: Each HQView unit needs to be provided with the exact same value for left and right blend region. Top and bottom blend region have to be identical as well, but don't need to have the same value as left and right. The HQView units do not communicate between each other and thus they have to make an assumption for auto zoom calculations and that is overlap of the neighbouring (and those beyond) projectors is identical.



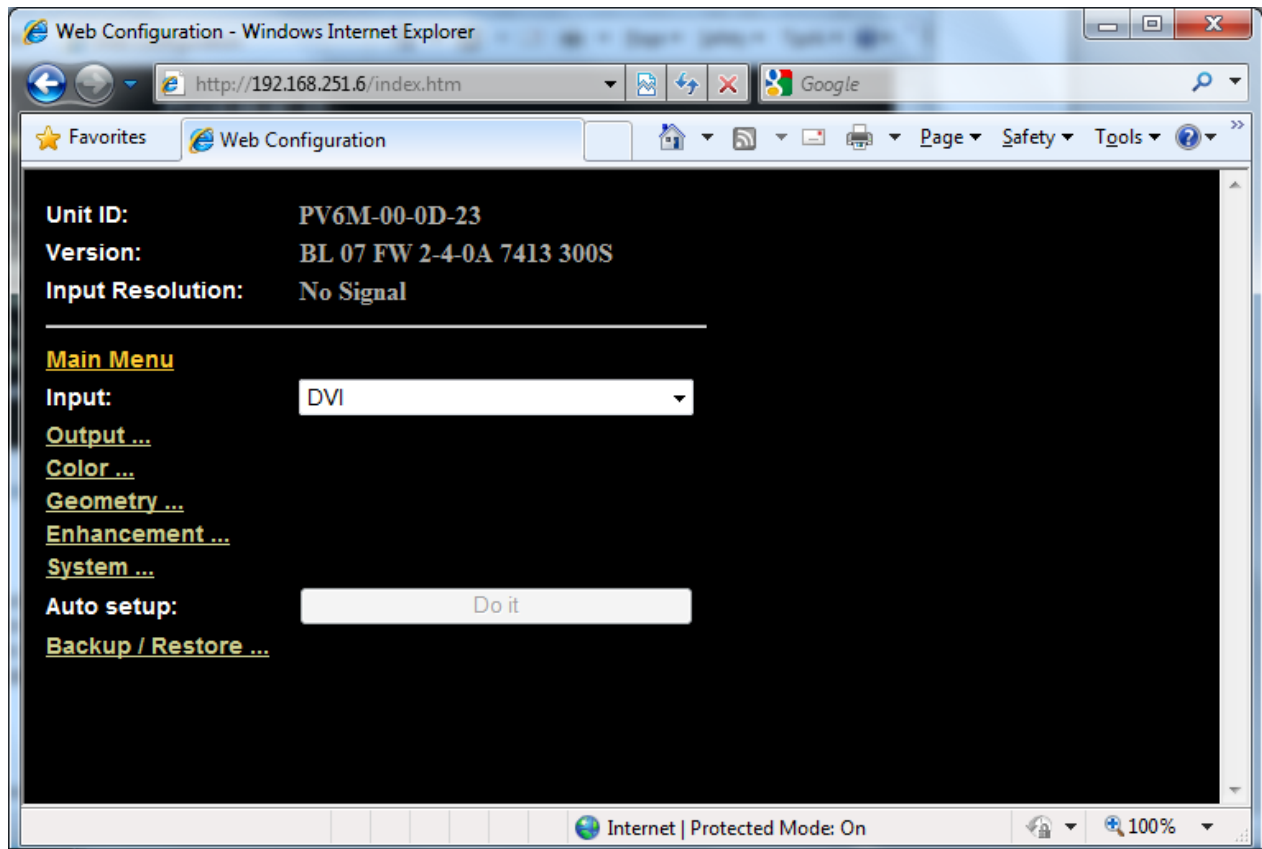
### **3.10.5. Blend Curve Type**

The blend curve type menu allows to set the blending characteristics. For setting up the overlap the Align Pattern should be used. Align Patter reduces the image intensity of each pixel in the blend area by half. When the blend region set up through the blend width menu and the physical blend match the S-Curve characteristics can be switched on. The image intensity is gradually reduced from the start of the blend to the edge of the respective projector image. The S-Curve Value slider allows to control the steepness of the S-Curve.

## REMOTE CONTROL WEB SERVER

### 4.1. Introduction

HQView-3xx features a web server which connects to a PC web browser via TCP/IP. The menu system of HQView-3xx is mirrored into the web browser and all menu items can be accessed and controlled through the keyboard or mouse of the PC.



Note: Backup/Restore is only available for V2 hardware.

### 4.2. Installing the Software

No extra software needs to be installed on a PC. The PC web browser is used as the graphical user interface for all control items. To connect to the HQView-3xx the TCP/IP address of the unit has to be entered into the address list box of the web browser in the following format <http://xxx.xxx.xxx.xxx>. The TCP/IP address assigned to HQView-3xx can be found in the System/Network Settings menu.

### 4.3. Discovery Tool

Calibre provides a DiscoveryTool.exe Windows application to identify Calibre boxes in the network. Clicking on the link of the recognized box will open a browser and make a connection to the corresponding box. The box identifier is made up of "PV6M" in the case of HQView-3xx followed by the 6 least significant digits of the MAC address. The MAC address of the box can be found in the System/Network Settings menu.

#### **4.4. Software Operation**

Once the address has been entered into the web browser starts to load pages from the HQView-300 mirroring the menu system of the unit. All menu items are shown as their respective buttons, sliders and list boxes and can be accessed and altered with the PC mouse or corresponding navigational key presses. When changes within a submenu make other menu items available immediately when using the on-screen menu of the LEDView this has to be either done manually by clicking on the refresh button of the web browser or is done with the next periodic auto refresh.

Various values are set by sliders. For fine increment of a slider value click on the slider and use the mouse wheel to change the value in steps of 1. Click again and the value is applied.

## FIRMWARE UPDATE

### **5.1. Introduction**

HQView-3xx has an USB port which allows a PC connection. With the Calibre PC Updater tool new firmware can be installed on HQView-3xx for feature upgrades and bug fixes.

### **5.2. Updating Firmware**

HQView-3xx accepts firmware downloads in a dedicated Updater mode. The unit is put in Updater mode by pressing and keeping the Menu key pressed at power up. If the Menu key is released within 10 seconds after power up HQView-3xx is in Updater mode. Otherwise, HQView-3xx is started normally. Whilst the Menu key is still pressed the RGB(S) input channel LEDs are flashing. When in Updater mode the RGB(S) input channel LEDs are flashing two times, then switched off, then flashing two times again, then switched off and so forth. Now the USB connection between PC and HQView-3xx needs to be established and the Calibre PC Updater tool to be started. The PC Updater tool allows to browse and select a firmware file in BREC format. Once a BREC is selected the Update Firmware button has to be pressed and the firmware download to the HQView-3xx into non volatile flash RAM starts. After completion of the download HQView-3xx needs to be restarted normally (without pressing the Menu key) for the change to take effect.

## ENVIRONMENTAL AND EMC

### **6.1. Recommended Operating Conditions**

Temperature	0°C to 40°C
Humidity (non condensing)	0% to 95%

### **6.2. Storage**

Temperature	-25°C to +85°C
Humidity (non condensing)	0% to 95%

### **6.3. CE and FCC Compliance**

**CE:** This product complies with the requirements of 89/336/EEC Electromagnetic Compatibility Directive amended by 92/31/EEC and 93/68/EEC, and 73/23/EEC Low Voltage Directive. Compliance is to EN55022 Class A.

**FCC:** **WARNING:** This equipment has been tested and found to comply with the limits for a Class A digital device pursuant to Part 15 of the FCC Rules. These limits are designed to provide reasonable protection against harmful interference when the equipment is operated in a commercial environment. This equipment generates uses and can radiate radio frequency energy and, if not installed and used in accordance with the instruction manual, may cause interference to radio communications. Operation of this equipment in a residential area is likely to cause interference in which case the user will be required to correct the interference at their own expense.

The user is cautioned that changes and modifications made to the equipment without approval of the manufacturer could void the user's authority to operate this equipment.

It is suggested that the user use only shielded and grounded signal cables to ensure compliance with FCC rules.