



iAudioCloud

User operation instruction manual

V1.1

20250421

Catalog

1.iAudioCloud distribution network.....	3-5
1.1Download iAudioCloud APP.....	3
1.2 First time distribution network.....	3-4
1.3 Add other devices that are not connected to the router.....	4
1.4How to name the device.....	5
2.Usage of iAudioCloud.....	5-10
2.1 Song playback and mode switching.....	5-6
2.2 Multi-room playback function.....	6
2.3 My Favorite function.....	7-8
2.4 My Music function.....	8-9
2.5 Music service.....	9
2.5.1 How to use TIDAL Connect.....	10
2.5.2 How to use Tunein.....	10-11
3. Third-party player song push.....	11
4. How to use Airplay.....	11-12

1.iAudioCloud distribution network

1.1 Download iAudioCloud APP

Please log in to the APP Store or Google play to download the iAudioCloud APP (see Figure 1)

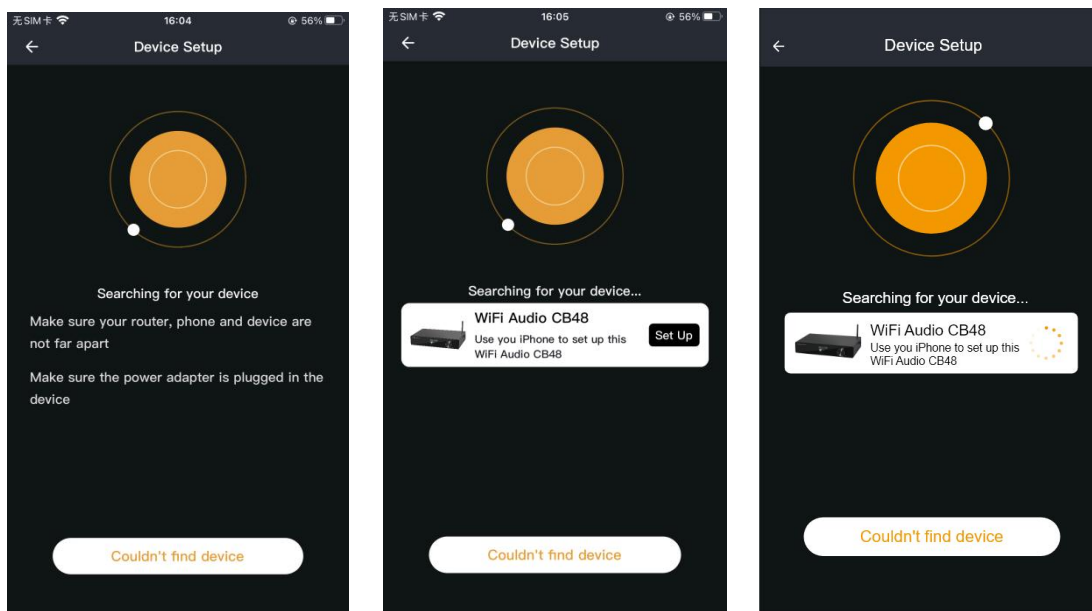


(Figure 1)

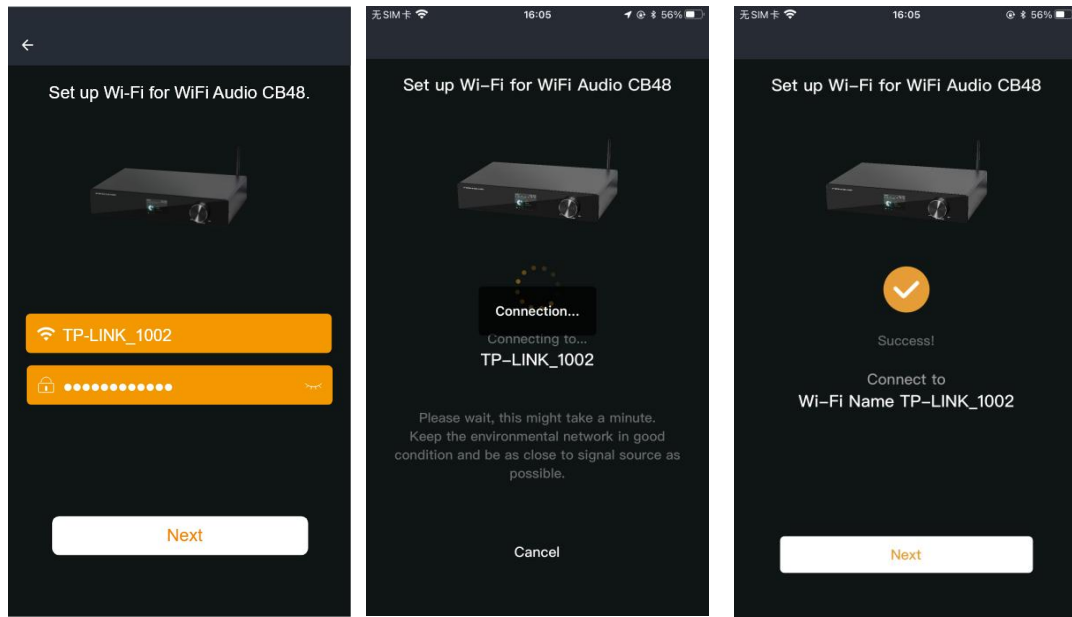
1.2 First time distribution network

Open the iAudioCloud App, follow the APP prompts, click Add Device, and after searching for the device that needs to be networked, select the WiFi in the same local area network as the mobile device, and enter the WiFi password to configure the device. (See Figure 2)

Tips: Before using this APP, please make sure that the wireless streaming devices and your speakers are properly connected and in working condition.



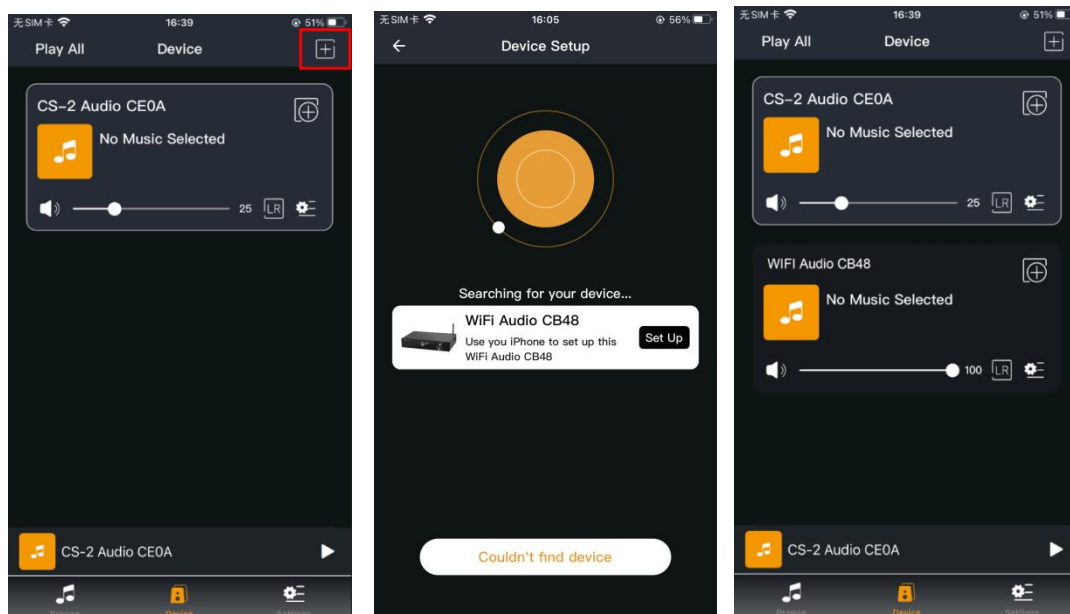
(Figure 2)



(Figure 2)

1.3 Add other devices that are not connected to the router

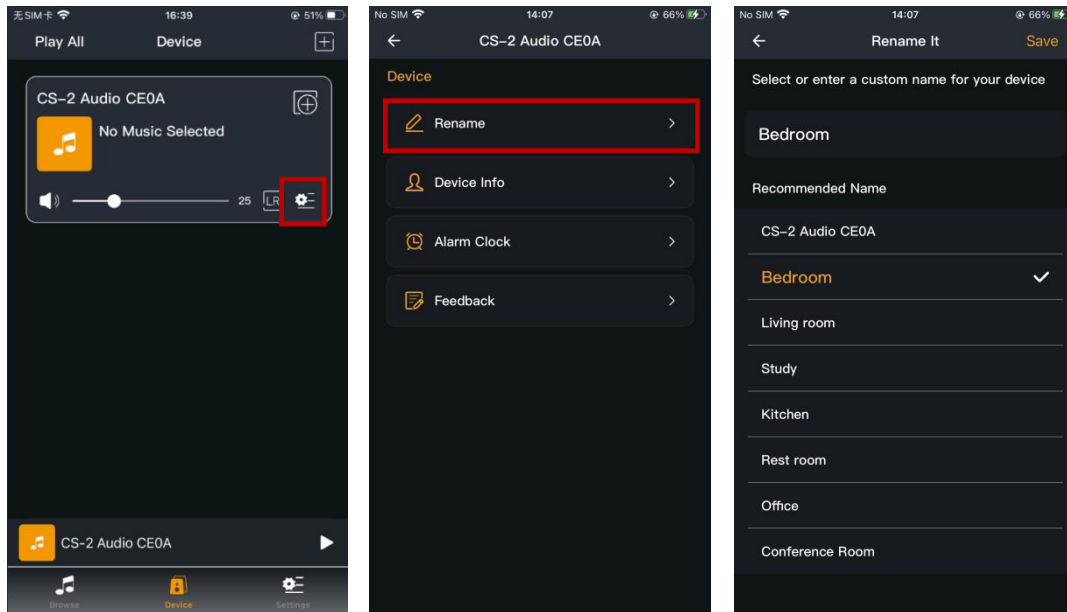
If you want to add other devices that are not yet connected to your home wireless network, you can do as follows: Click "+" in the list of devices, and add devices according to the same steps as adding devices for the first time. Once the addition is complete, you can see that the newly added device appears in the device list. (See Figure 3)



(Figure 3)

1.4 How to name the device

After you have added a device, you can name it according to your needs. For example, if you have one speaker in your bedroom, you can choose to name it bedroom, and another speaker in your living room, you can name it living room.(See Figure 4)

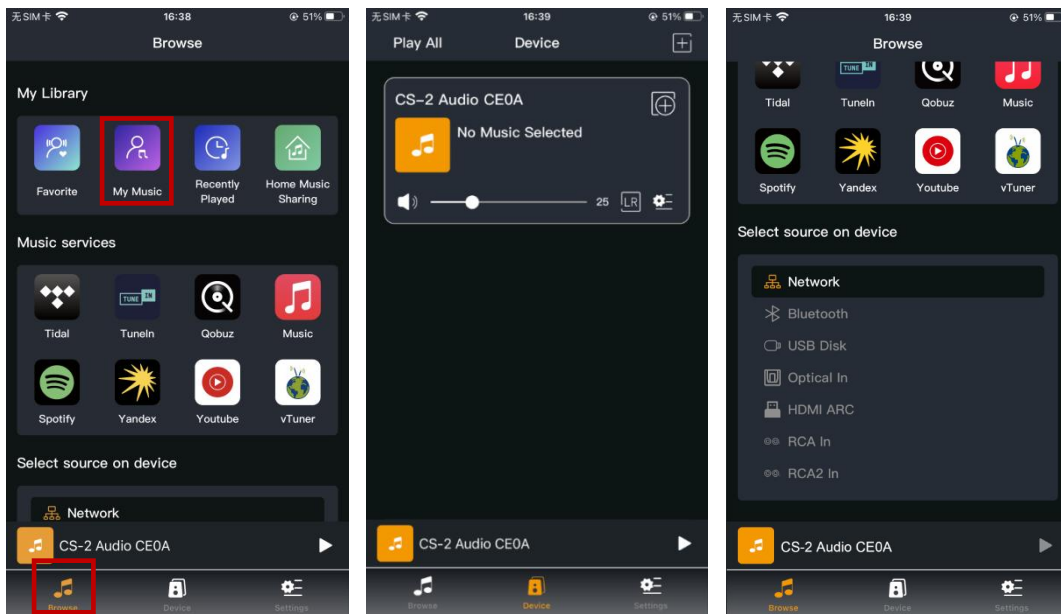


(Figure 4)

2.Usage of iAudioCloud

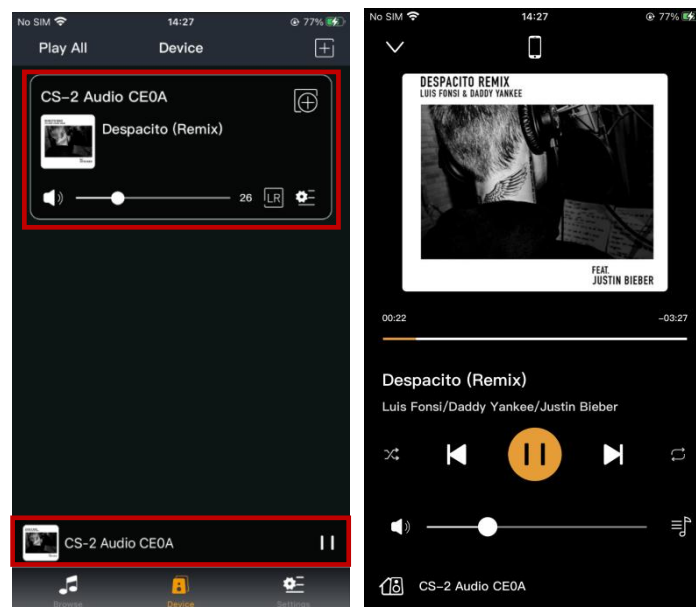
2.1 Song playback and mode switching

This APP has functions such as local song push, volume adjustment, device source switching, etc. In the APP Browse interface, you can directly click My Music or music source to select music to push and play. Slide down to the bottom in the Browse interface, and you can also change the device source on the APP. (see Figure 5)



(Figure 5)

Click the playback device on the APP to enter the playback interface, where you can see the song album picture, progress information, volume, loop mode, etc. at a glance. (see Figure 6)

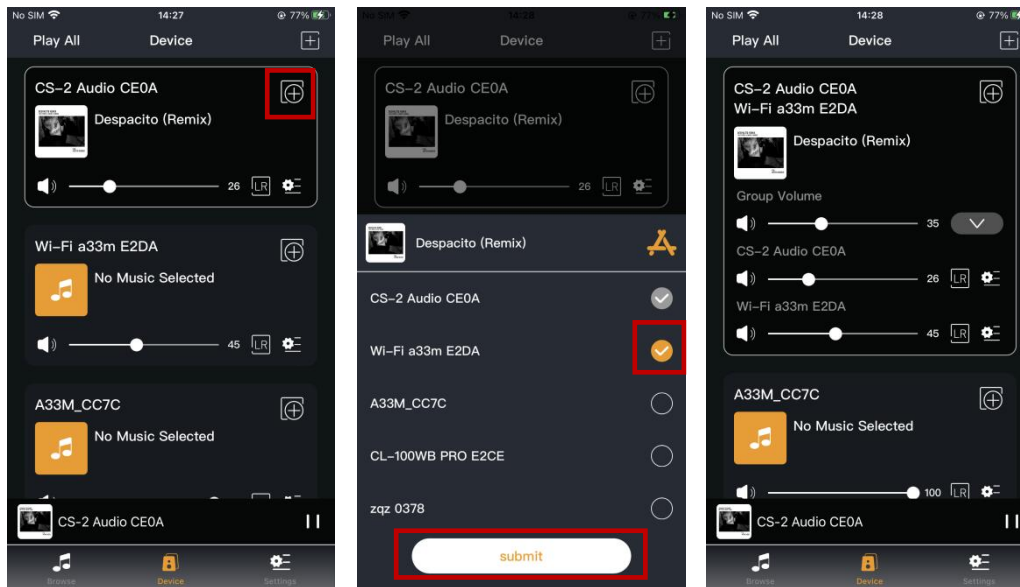


(Figure 6)

2.2 Multi-room playback function

This APP also supports the function of synchronous playback of operating devices. In the device

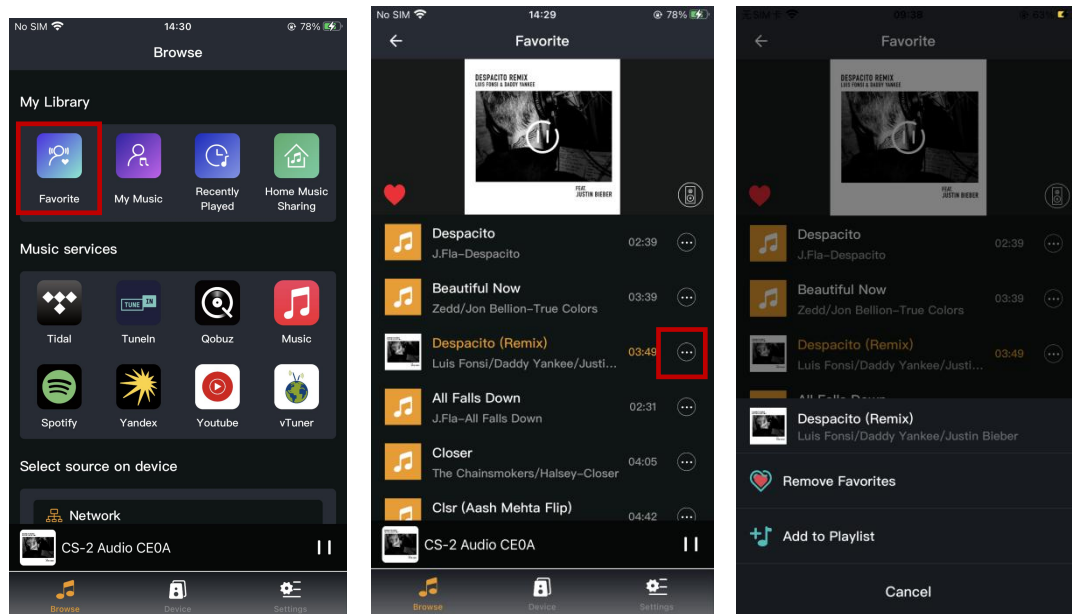
list interface of the APP, click the "+" sign of the main speaker device, check other devices as secondary speakers, and click OK to achieve synchronous playback of audio without delay in the group, creating a more comfortable listening environment for you.(see Figure 7)



(Figure 7)

2.3 My Favorite function

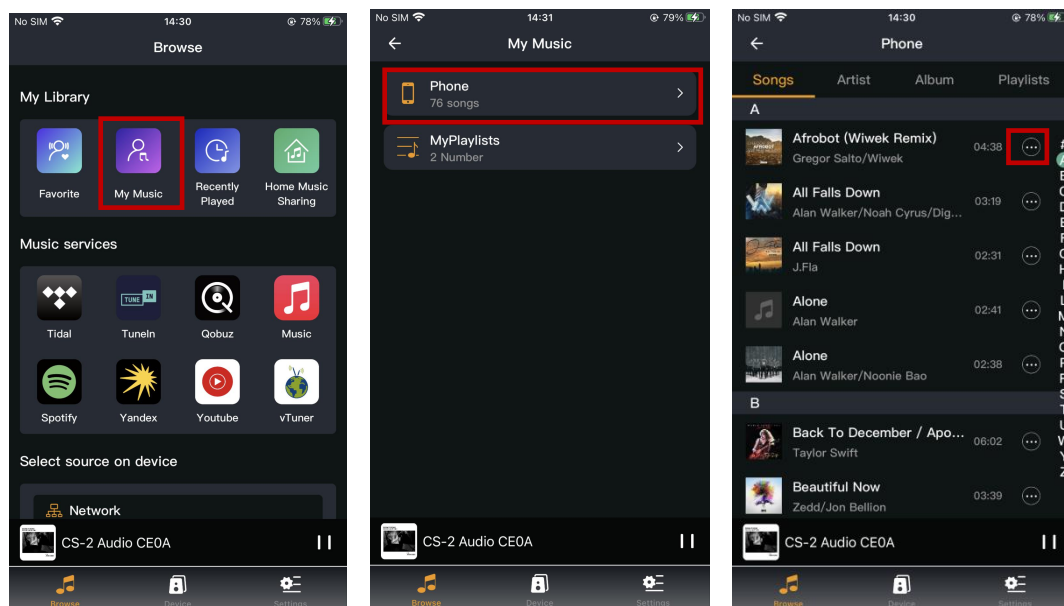
Through the Favorite function, you can freely select and collect your favorite songs. In the "My Music" music list on the "Browse" interface, click "..." behind the music, or in the music playback interface, click to add the song to my favorites (see Figure 6). In the "Browse" interface, click to enter the Favorite interface to manage the collected songs. (See Figure 8)



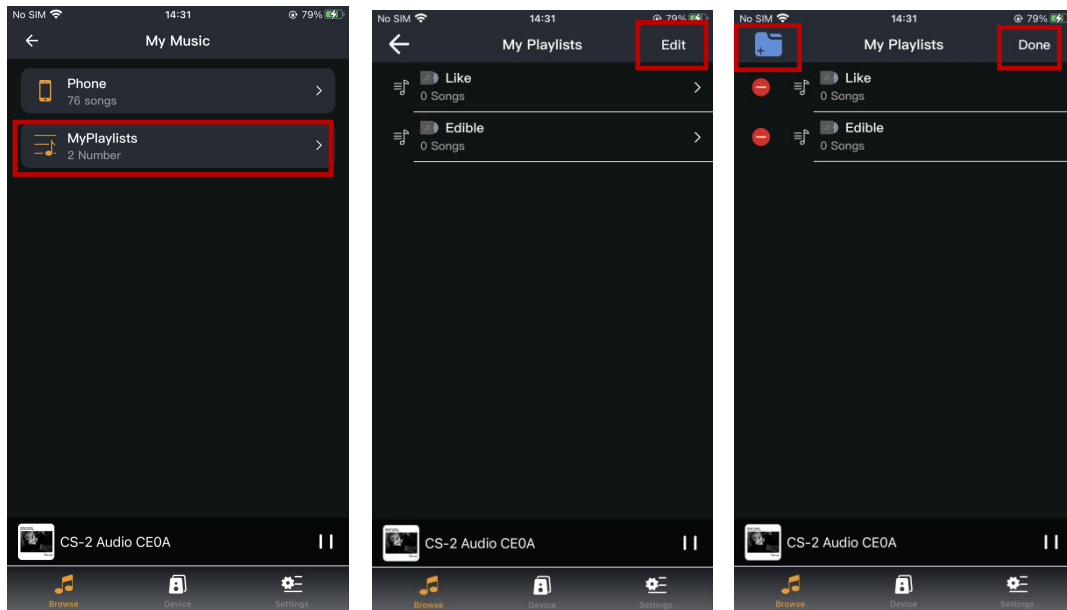
(Figure 8)

2.4 My Music function

Open My Music in the Browse interface of the APP, and you can see the songs, playlists and playlists stored locally on the phone. In the local song list, you can directly select songs to push to the device for playback, or add music to the playlist or save it to my favorites (see Figure 9). You can also manage playlists here. (see Figure 10)



(Figure 9)



(Figure 10)

2.5 Music service

The APP reserves some quick access interfaces for music sources, such as Tidal, TuneIn, Qobuz, Music, Spotify, Yandex, Youtube, and vTuner. You can edit, display, or hide the audio source interface in the Settings interface. (see Figure 11)

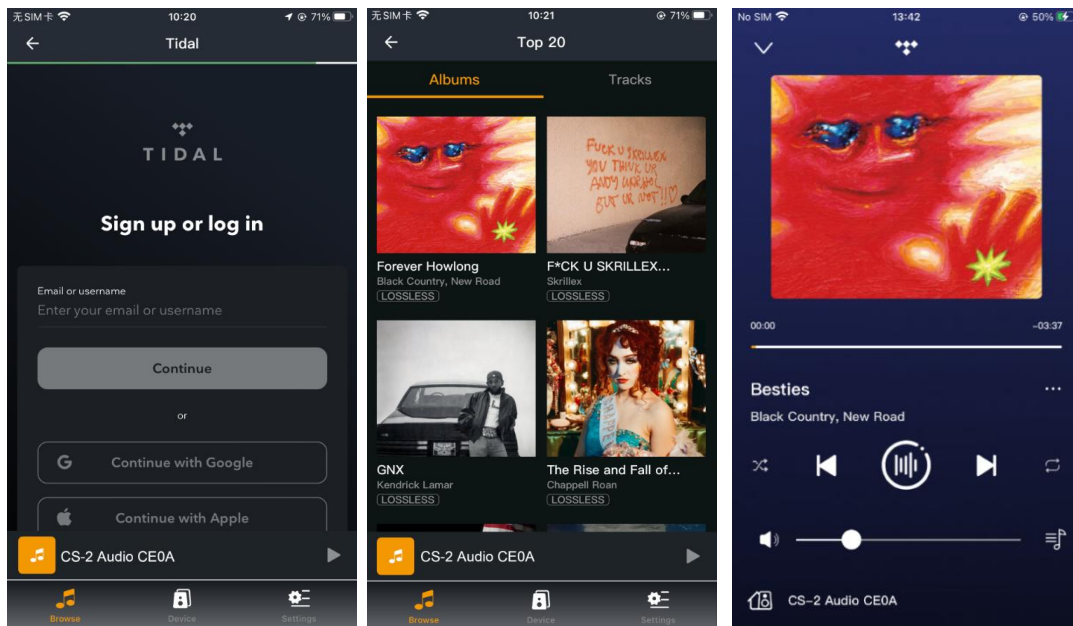


(Figure 11)

2.5.1 How to use TIDAL Connect

Open Tidal in Music services in the Browse interface, and you will see the Tidal login interface.

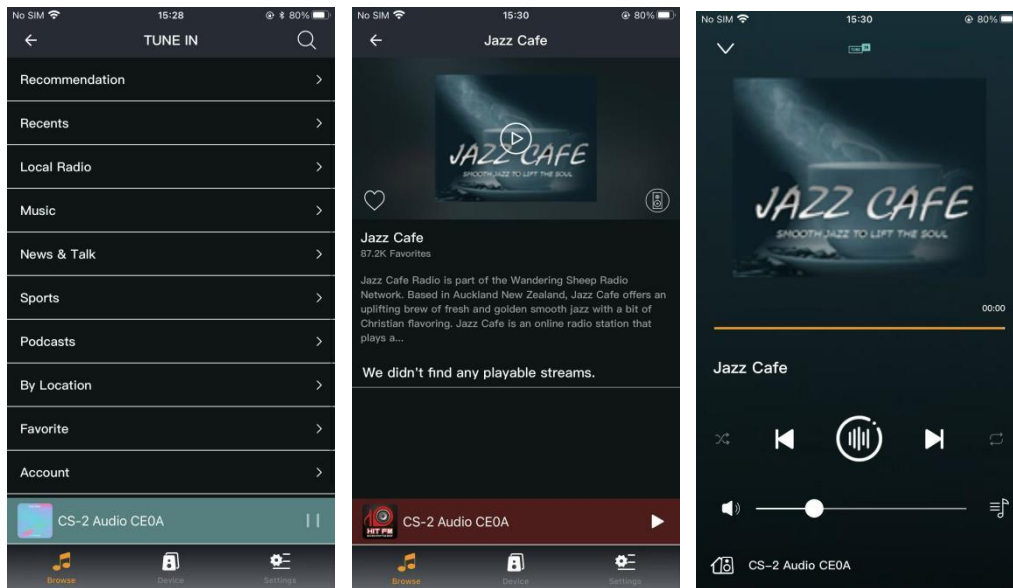
After entering Tidal, you can directly select songs and push them to the device for playback (see Figure 12)



(Figure 12)

2.5.2. How to use Tunein

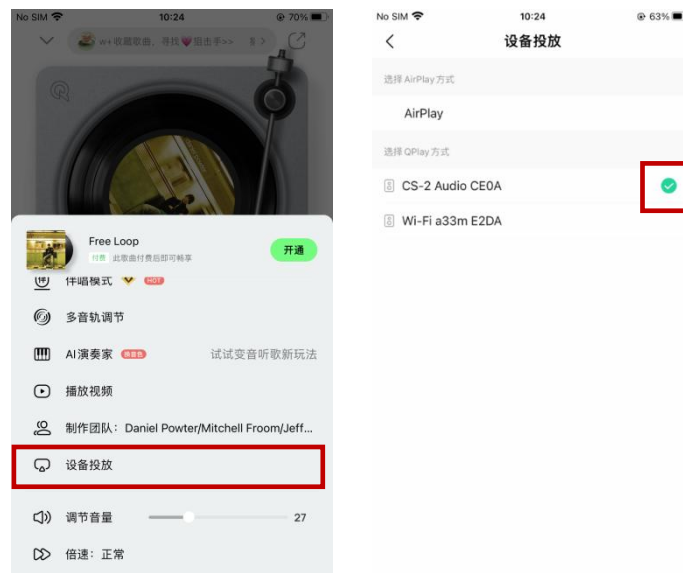
Open TuneIn in Music services in the Browse interface, and you can see different types of broadcast lists. In the TuneIn broadcast list, you can directly select the broadcast to push to the device for playback. (see Figure 13)



(Figure 13)

3. Third-party player song push

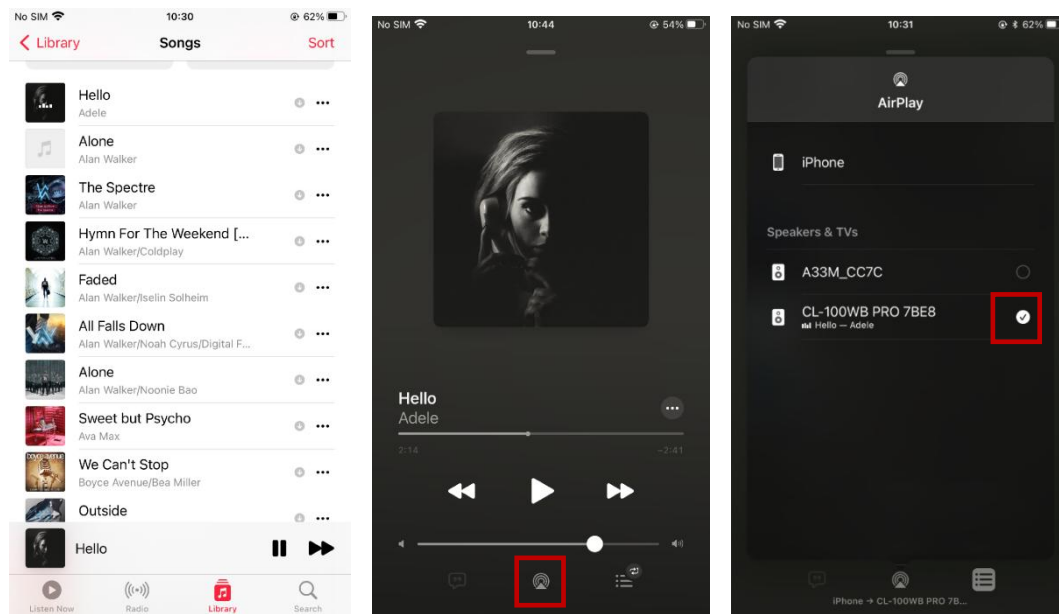
When using a third-party music player to play music, you can push songs to wireless devices within the local area network through the DLNA protocol (or Qplay) (see Figure 14)



(Figure 14)

4. How to use Airplay

The following uses APPLE MUSIC as an example to demonstrate the Airplay function. Open APPLE MUSIC, select the song you want to play, and select the device you want to play the music on in the Airplay list. (see Figure 15)



(Figure 15)