

# MED-VPR-8430

## Multi-viewer with Streaming Solution and Stand-alone PC-based System for Video Capturing

### PANELS

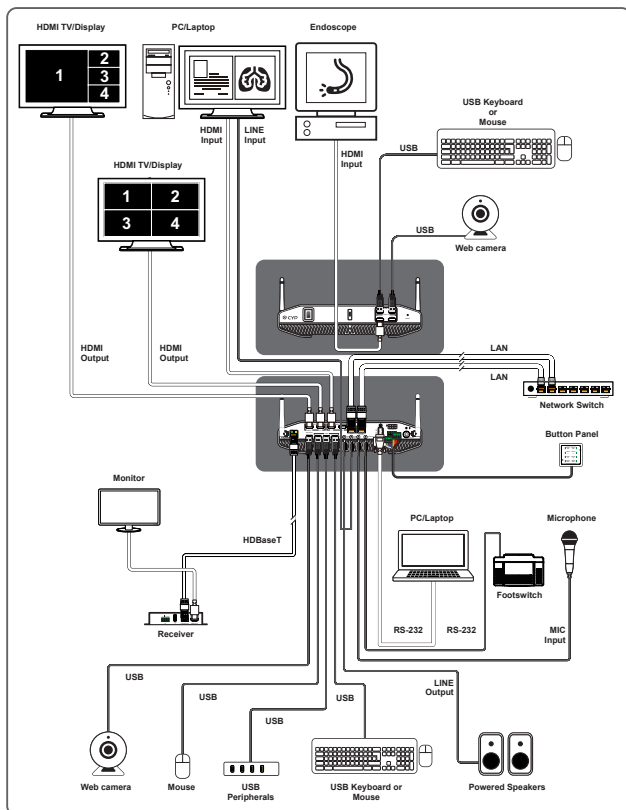


The MED-VPR-8430 video recorder is dedicated design to integrate with multiple medical devices for video recording during operation or diagnosis. It supports high quality video of 4K@60 video input and output to display over HDMI. The video from medical devices such as endoscope, X-Ray system, ultrasonic, da Vinci Surgical System...etc. exports to monitor and is recorded to build in hard disk in recorder simultaneously. This medical recorder supports real time display and recording and complies with medical criteria for fulfill medical application.

### FEATURES

- UHD\* 4K@60Hz video from medical devices can be recorded to the built in SSD storage (downscaled to 1080p@60Hz)
- Records using the H.264 & H.265 codecs to offer the highest quality video recording possible while maintaining optimal file sizes
- Intel Atom processor based PC combined with Pro-AV streaming functionality
- Included CYP App provides support for easy video and audio configuration
- Supports power-isolated HDMI, RS-232, and, LAN ports.
- Supports video source previewing
- Includes TPM 2.0 (Trusted Platform Module) for industry standard hardware based security
- Medical grade design fulfills medical application compliance requirements.

### DIAGRAM



### SPECIFICATIONS

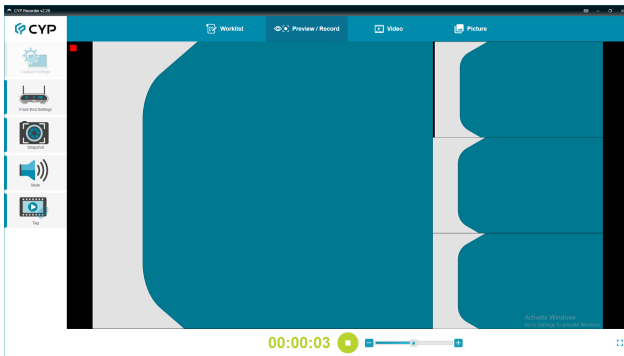
<b>Interfaces</b>	
<b>Input Port</b>	4 HDMI (Type-A) 8 Trigger (10-pin terminal block) 2 Analog Stereo (3.5mm)
<b>Output Port</b>	2 HDMI (Type-A) 1 HDBaseT (RJ-45) 1 Analog Stereo (3.5mm)
<b>Bi-directional Port</b>	1 GbE LAN (RJ-45) 1 GbE LAN (RJ-45) with 4KV isolation
<b>Control I/O</b>	1 UART (RX/TX only) (3.5mm) 1 RS-232 (DB-9) with 4KV isolation 3 USB2.0 (Type-A) 1 USB2.0 (Type-A) with 4KV isolation (12MB/Bits) 2 USB3.0 (Type-A)
<b>Video</b>	
<b>HDMI Compliance</b>	HDMI 2.0 (DVI 1.0)
<b>HDCP Compliance</b>	Input:2.0b Output: 2.2
<b>Input Signal Types</b>	4096×2160p@60 8-bit YUV 4:4:4
<b>Output Signal Types</b>	4096×2160p@60 8-bit YUV 4:4:4
<b>Resolutions</b>	
<b>Maximum Input</b>	HDMI 4096×2160p@60
<b>Maximum Output</b>	HDMI 4096×2160p@60 HDBaseT 4096×2160p@60 (4:2:0) Recording 1920×1080p@60 HDMI 1080p@60
<b>Audio</b>	
<b>HDMI</b>	LPCM (8 Channels)
<b>Line In</b>	2 Vrms S/N Ratio: > 80dB (1kHz with 0dBFS)
<b>Mic In</b>	2 Vrms S/N Ratio: > 80dB (1kHz with 0dBFS)
<b>Line Out</b>	2 Vrms S/N Ratio: > 80dB (1kHz with 0dBFS)
<b>System</b>	
<b>CPU Memory</b>	Intel Elkhart Lake x6425E 2.0Ghz (Boost 3.0Ghz) DDR4-16GB Soldered on board
<b>Storage</b>	2.5 Inch SATA SSD 1TB M.2 SATA SSD (Expandable)
<b>WiFi</b>	WIFI 802.11 abgn/ac + BT 5.0 LE (Optional)
<b>Power</b>	
<b>Power Supply</b>	24V/4.17A DC
<b>Enclosure</b>	
<b>Chassis Material</b>	Metal (Aluminum)
<b>Chassis Color</b>	White
<b>DimensWions (W×H×D)</b>	296mm×296mm×67mm [Case Only] 318mm×316mm×67mm [All Inclusive]
<b>Weight</b>	4.3kg
<b>Certification</b>	
<b>Medical</b>	CE, FCC Part 18B Compliant IEC/EN60601-1 Compliant IEC/EN60601-1-2 Compliant
<b>Field Firmware Update</b>	
<b>App</b>	

# MED-VPR-8430

## Multi-viewer with Streaming Solution and Stand-alone PC-based System for Video Capturing

### CONTROL INTERFACE

1. Snapshot: Capture Video to save as photo

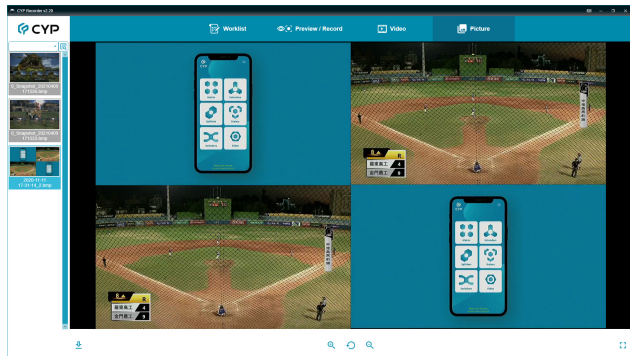


2. Video Mode



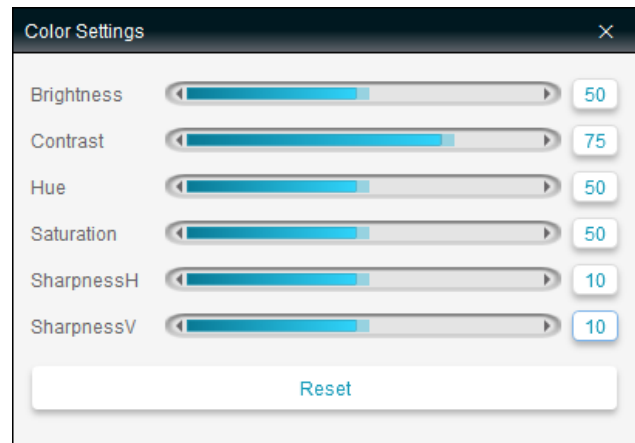
- ① Video List: file list (.mp4) of recorded videos.
- ② Display: The window of video displaying. To double click to enter or exit to full screen mode.
- ③ Timeline: Timeline of video displaying.
- ④ Previous: Playing previous video.
- ⑤ Rewind: Rewinding playing video.
- ⑥ Play/Pause: Play or pause playing video.
- ⑦ Fast Forward: Fast forward playing video.
- ⑧ Next: Playing next video.
- ⑨ Snapshot: Capture video to save as photo.
- ⑩ Full Screen: Active window as full screen and press ESC to exit from full screen.

3. Picture Mode



- ① Picture List: List all pictures (.bmp or .jpg) under Snapshot path.
- ② Display: The window of video displaying. To double click to enter or exit to full screen mode.
- ③ Reset Default: Reset the displaying picture to default setting.
- ④ Zoom In: Zoom in picture to 50%.
- ⑤ Zoom Out: Zoom out picture to 50%.
- ⑥ Full Screen: Active window as full screen and press ESC to exit from full

4. Color Settings: Set up brightness, contrast, hue and so on to optimize video quality.screen.



### ORDERING INFORMATION

Model No.	Product Description
<b>MED-VPR-8430</b>	Multi-viewer with Streaming Solution and Stand-alone PC-based System for Video Capturing
<b>CH-1610RXPL</b>	UHD HDMI/USB to HDBaseT Receiver